

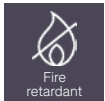
SMILE HIGH BACK CHAIR

1SZH1-118

46.3"H | 32.3"W | 28.3"D

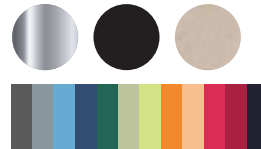
Seat height: 15.7"

Weight: 88.2 lbs.



KEY FEATURES

- Subtle wings provide comfort and privacy
- Sweeping seat design acts as an integrated armrest
- Strong and elegant legs



MATERIAL/FABRICATION

The Smile range surrounds, comforts and ensconces its occupants, providing a private and relaxing space. Core to the design (and the name) is a sweeping curved seat platform which rises to become a tactile, integrated armrest. All fabrics are fire retardant, in accordance with testing standards

TEST STANDARDS

- Fire retardant to BS7176:2007 source 5
- Strength and stability tested to BS EN 16139:2013

COLOR/FINISH

Frame available in Chrome, Black powdercoated or Birch wood finish

FABRIC

Available in a wide choice of waterproof vinyls and fabrics

ASSEMBLY

Arrives assembled and ready to use

INSTALLATION/FITTING

No fitting required

MAINTENANCE

A regular light dusting with a soft cloth is all that is required to maintain the shell's appearance. Real wood veneers are soft and can be scratched relatively easily, so it is important to avoid using abrasive materials for cleaning and care should be taken when moving items with a rough surface so as not to damage the surface. Excessive amounts of water should be avoided as this too will damage the veneer. Check before using furniture polish that it is safe for use on real wood veneers. See upholstered furniture section of our care guidelines online for fabric care instructions

WARRANTY

7 year guarantee (does not include fabrics)

T 800.496.9324

E inquiries@pineapplecontracts.com

W us.pineapplecontracts.com

Pineapple