



TEST REPORT: 4791224065.1 Rev.1

This report cancels and replaces the previous N° 4791224065.1 issued on 8/5/2024

APPLICANT

Name: Pineapple Contracts Unlimited
Address: Westmead
Aylesford, ME20 6XJ
United Kingdom



Product: ANSI/BIFMA X5.5-2021 - Harby coffee table

DATE

Sample in:	22/4/2024	(dd/mm/yyyy)
Tests start:	6/5/2024	(dd/mm/yyyy)
Tests end:	9/5/2024	(dd/mm/yyyy)
Report issue:	9/5/2024	(dd/mm/yyyy)

OVERALL DIMENSIONS:

Measured:	Depth:	550 mm;	Height:	466 mm;
	Width:	1000 mm;	Weight:	23,5 kg;
Nominal:	Depth:	ND;	Height:	ND;
	Width:	ND;	Weight:	ND;
Sample number	6986499	Order Number:	15205241	

REFERENCE STANDARD

ANSI/BIFMA X5.5:2021 Desk and Table Products

NOTE: clauses considered as not applicable to the product are not listed in this report.

Sample defects before the test: NO VISIBLE DEFECTS

Tests have been performed at a temperature of 21 ± 6 °C

The tests have been performed on 1 sample as requested by the customer

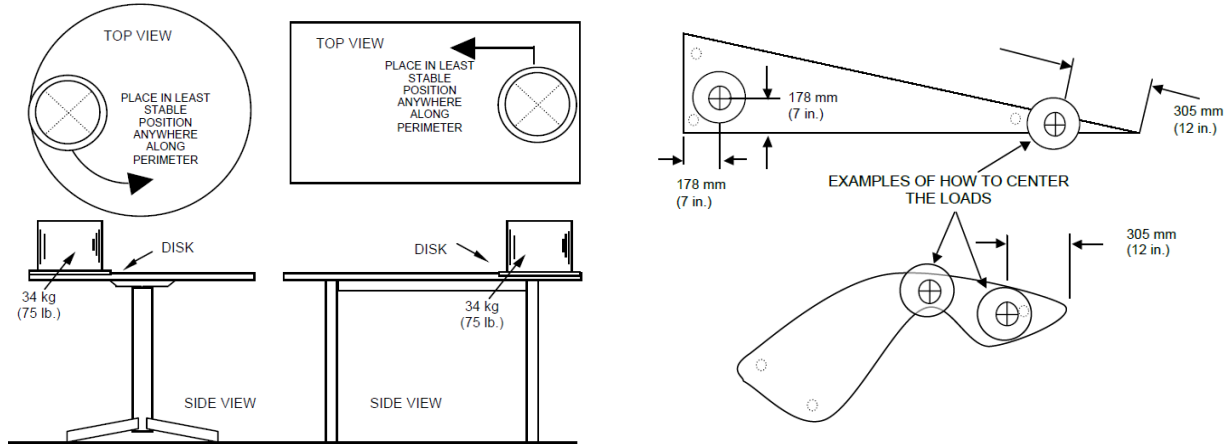
The sample is classified as **Category: II** (Desks or tables with surfaces which are always less than or equal to 610 mm (24 inches) in height)

Technician
Rodolfo Sala

Laboratory Manager
Matteo Longoni

*Note: any copy, even partial, of this report, and any change or alteration to it are strictly forbidden.
The test results listed in this report are relevant only for the tested sample. Sampling performed by the customer.*

Stability Under Vertical Load Test ANSI/BIFMA X5.5:2021 Par. 4.3



Height from the floor: 466 mm

Distance of the load disk (305 mm diameter) center from the table edge: 178 mm

Length of sample: 1000 mm

Vertical load (kg)	Rating
57	P

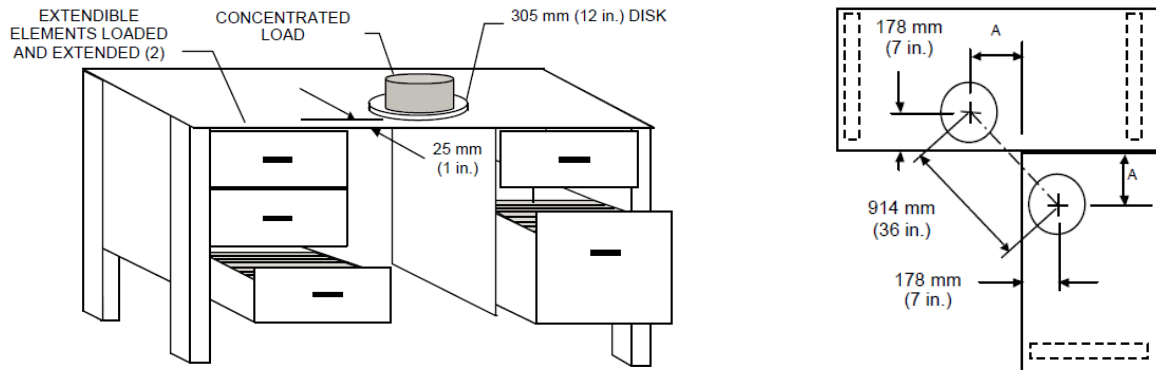
Note:

Test performed with the edge of load disk aligns with the edge of the top

Vertical load (kg)	Rating
34	P

Note:

Concentrated Functional Load Test ANSI/BIFMA X5.5:2021 Par. 5.2



Height from the floor: 466 mm

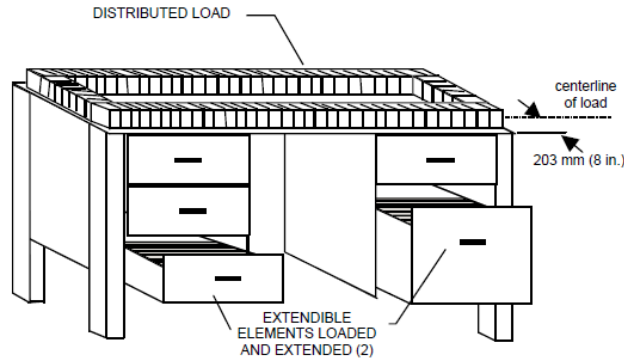
Distance of the load disk (305 mm diameter) center from the table edge: 178 mm

Length of sample: 1000 mm

Total load applied (kg)	Concentrated load (kg)	Time of test (minutes)	Force required to extract the extendible elements (N)	Rating
27 (0.027 kg/mm on shelves)	91	60	-	P

Note: The load is determined according table 1.

Distributed Functional Load Test ANSI/BIFMA X5.5:2021 Par. 5.3



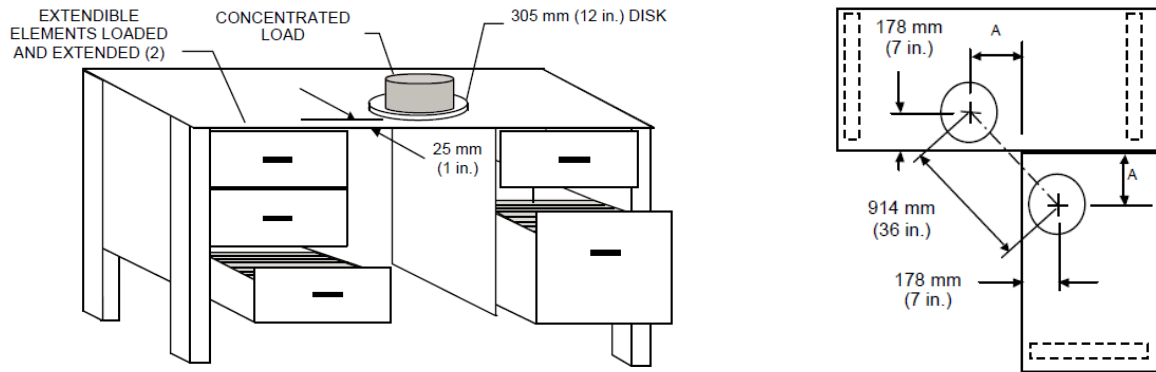
Height from the floor: 466 mm
Perimeter of sample: $(1000 + 500) \times 2 = 3000$ mm
Distance of centerline of load from the edge: 203 mm

Total load applied (kg)	Load applied (kg)	Time of test (minutes)	Force required to extract the extendible elements (N)	Rating
0.027 kg/mm	-	60	-	NA

Note: The load is determined according table 1 and 2.

This test does not apply since the top perimeter is less than 3378 mm.

Concentrated Proof Load Test ANSI/BIFMA X5.5:2021 Par. 5.4



Height from the floor: 1000 mm

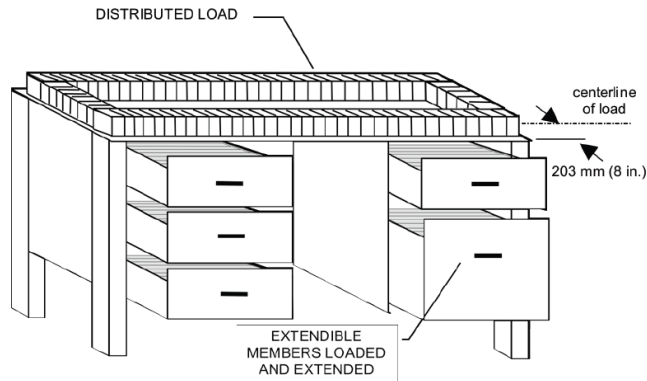
Distance of the load disk (305 mm diameter) center from the table edge: 178 mm

Length of sample: 1000 mm

Total load applied (kg)	Load Concentrated (kg)	Time of test (minutes)	Force required to extract the extendible elements (N)	Rating
41 (0.041 kg/mm on shelves)	136	15	-	P

Note: The load is determined according table 1 and 2.

Distributed Proof Load Test ANSI/BIFMA X5.5:2021 Par. 5.5



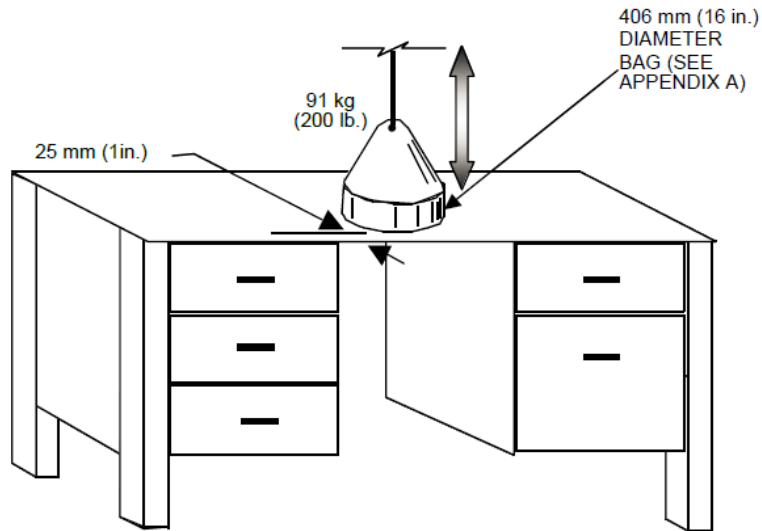
Height from the floor: 466 mm
Perimeter of sample: $(1000 + 500) \times 2 = 3000$ mm
Distance of centerline of load from the edge: 203 mm

Total load applied (kg)	Load applied (kg)	Time of test (minutes)	Force required to extract the extendible elements (N)	Rating
0.027 kg/mm	-	15	-	NA

Note: The load is determined according table 1 and 2.

This test does not apply since the top perimeter is less than 3378 mm of perimeter.

Top Load Ease Cycle Test ANSI/BIFMA X5.5:2021 Par. 6



Height from the floor: 466 mm

Depth of the top: 500 mm

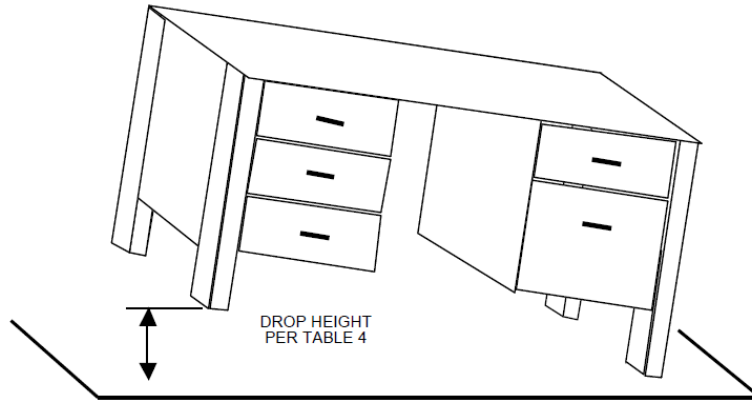
Distance between the bag and the edge: 25 mm

Height at which the surface is set to perform the test: 466 mm

Weight the bag of test (kg)	Total load applied (kg)	N° cycles	Frequency cycles (cycles/minute)	Force required to extract the extendible elements (N)	Rating
91	91	10.000	10	-	P

Note: Force required to extract the extendible elements is not greater than 50 N. The load is determined according table 1 and 2.

Desk/Table Unit Drop Test ANSI/BIFMA X5.5:2021 Par. 7



Length of sample: 1000 mm

Weight of sample: 23,5 kg

Weight of sample (kg)	Drop height (mm)	N° cycle	Force required to extract the extendible elements (N)	Rating
< 45	180	1 + 1		NA
45 - 90	120	1 + 1		NA
> 90 – 136	60	1 + 1		NA
> 136	-	-	-	NA

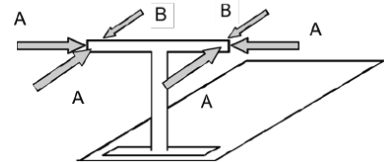
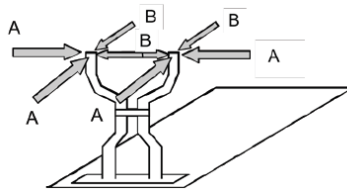
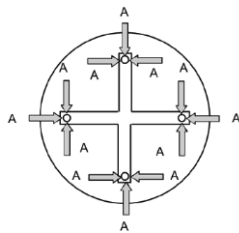
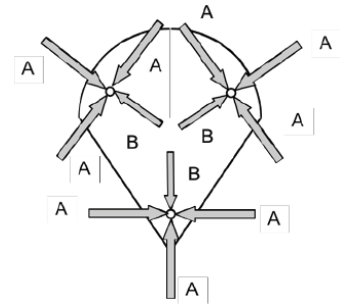
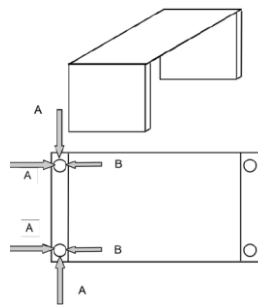
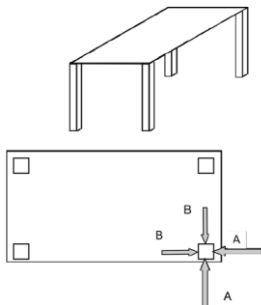
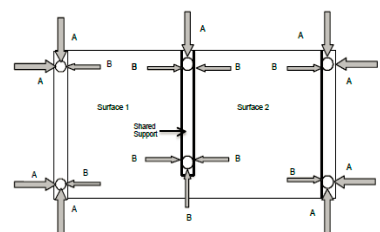
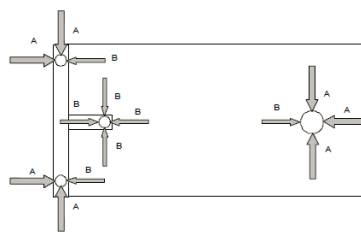
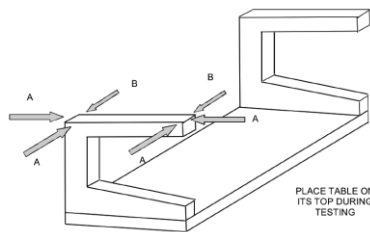
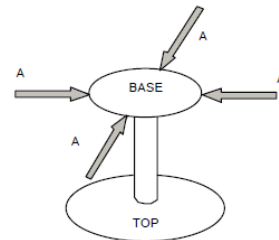
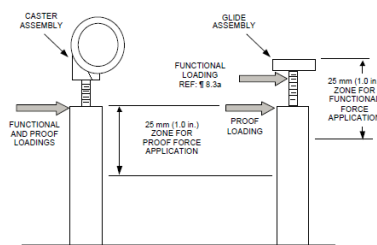
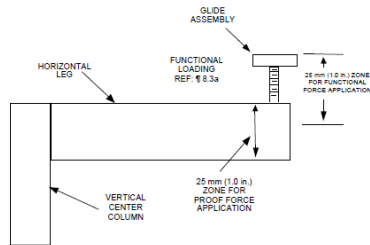
Note: Test is not applicable as the length is less than 1829 mm



TEST REPORT: 4791224065.1 Rev.1

Issued on:: 9/5/2024

Leg Strength Test - Standard ANSI/BIFMA X5.5:2021 Par. 8.2





TEST REPORT: 4791224065.1 Rev.1

Issued on:: 9/5/2024

Distance of the load point measured from the top of the leg: 25 mm

Functional Test Procedure ANSI/BIFMA X5.5:2014 Par. 8.3

Category	Weight (kg)	Force calculation formula (Af)	Force calculated (Af) (N)	Force applied (Af) (max. 445 N) (N)	Force calculation formula (Bf)	Force applied (Bf) (N)	Force required to extract the extendible elements (N)	Rating
I	-	$0,5 \times (\text{Weight}) \times 9.8 + 222$	-	-	$0.5 \times A_F$	-	-	NA
II / III	23,5	$0,5 \times (\text{Weight}) \times 9.8 + 44$	159.15	159.15	$0.5 \times A_F$	79.757	-	P

Note: Category 2.

Proof Test ANSI/BIFMA X5.5:2014 Par. 8.5

Category	Weight (kg)	Force calculation formula (Ap)	Force calculated (Ap) (N)	Force applied (Ap) (max. 668 N) (N)	Force calculation formula (Bp)	Force applied (Bp) (N)	Force required to extract the extendible elements (N)	Rating
I	-	$1.5 \times [0.5 \times (\text{Weight}) \times 9.8 + 222]$	-	-	$0.5 \times A_P$	-	-	NA
II / III	23,5	$1.5 \times [0.5 \times (\text{Weight}) \times 9.8 + 44]$	238.725	238.725	$0.5 \times A_P$	119.36	-	P

Note: Category 2.



TEST REPORT: 4791224065.1 Rev.1

Issued on:: 9/5/2024

Key:

- P** = PASS, the sample MEETS the standard requirement.
- F** = FAIL, the sample DOES NOT MEET the standard requirement.
- NA** = NON APPLICABILE, the requirement/test IS NOT APPLICABLE to the sample.
- NR** = NOT REQUESTED, On Customer request the test is NOT PERFORMED.
- NP** = General note (see details).
- ND** = NOT DECLARED.
- //** = The rating of test CANNOT BE EXPRESSED, see details in test report

END OF TEST REPORT