



TEST REPORT: 4791224055.1

APPLICANT

Name: Pineapple Contracts Unlimited

Address: Westmead
Aylesford, ME20 6XJ
United Kingdom

Product: ANSI/BIFMA X5.5-2021 - Harby desk



DATE

Sample in:	22/4/2024	(dd/mm/yyyy)
Tests start:	22/4/2024	(dd/mm/yyyy)
Tests end:	27/5/2024	(dd/mm/yyyy)
Report issue:	28/5/2024	(dd/mm/yyyy)

OVERALL DIMENSIONS:

Measured:	Depth:	615 mm;	Height:	740 mm;
	Width:	1050 mm;	Weight:	25,5 kg;
Nominal:	Depth:	ND;	Height:	ND;
	Width:	ND;	Weight:	ND;

Sample number 6986498 **Order Number:** 15205222

REFERENCE STANDARD

ANSI/BIFMA X5.5:2021 Desk and Table Products

NOTE: clauses considered as not applicable to the product are not listed in this report.

Sample defects before the test: NO VISIBLE DEFECTS

Tests have been performed at a temperature of 21 ± 6 °C

The tests have been performed on 1 sample as requested by the customer

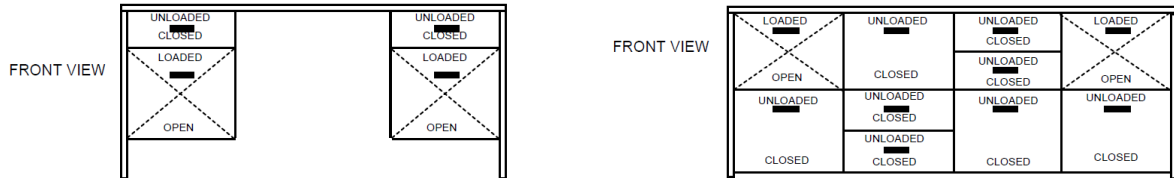
The sample is classified as **Category: I** - Desks or tables with surfaces greater than 610 mm (24 inches) in height and have a total work surface area greater than 0.46 m² (5 ft.²).

Technician
Rodolfo Sala

Laboratory Manager
Matteo Longoni

*Note: any copy, even partial, of this report, and any change or alteration to it are strictly forbidden.
The test results listed in this report are relevant only for the tested sample. Sampling performed by the customer.*

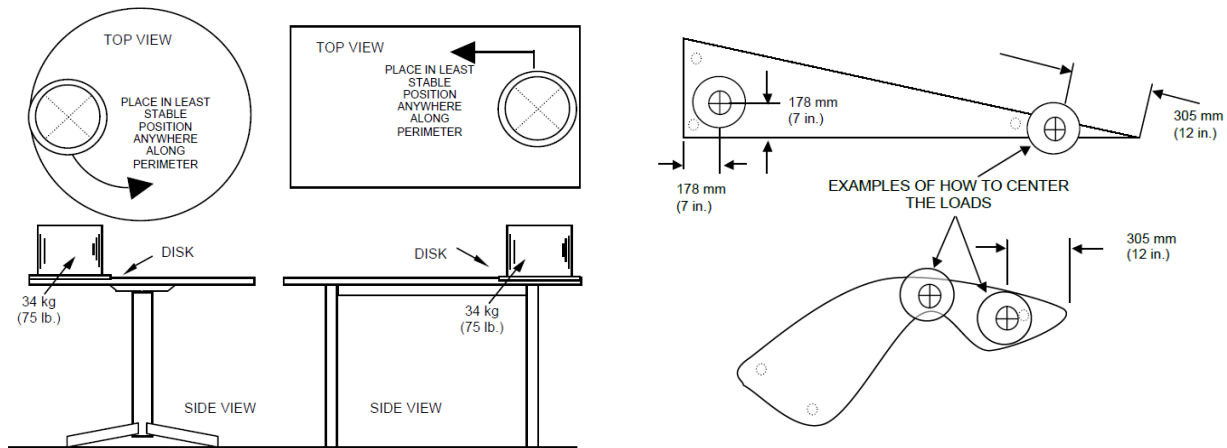
Stability with Extendible Elements Open Test ANSI/BIFMA X5.5:2021 Par. 4.2



Position of the extendible element 1	Position of the extendible element 2	Load - Extendible element 1 (kg)	Load - Extendible element 2 (kg)	Rating
At top	Second drawer from top	8.5	8.5	P

Note: Extension elements were fully opened

Stability Under Vertical Load Test ANSI/BIFMA X5.5:2021 Par. 4.3



Height from the floor: 740 mm

Distance of the load disk (305 mm diameter) center from the table edge: 178 mm

Length of sample: 1050 mm

Vertical load (kg)	Rating
57	P

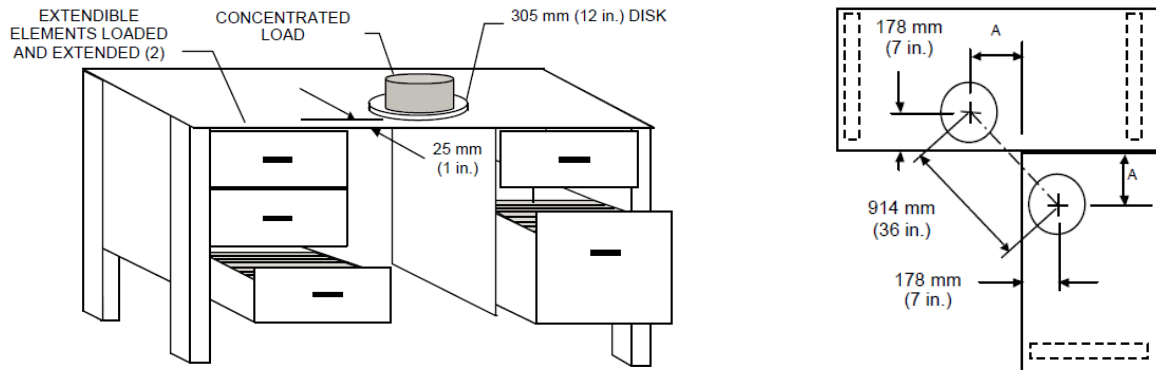
Note:

Test performed with the edge of load disk aligns with the edge of the top

Vertical load (kg)	Rating
34	P

Note:

Concentrated Functional Load Test ANSI/BIFMA X5.5:2021 Par. 5.2



Height from the floor: 740 mm

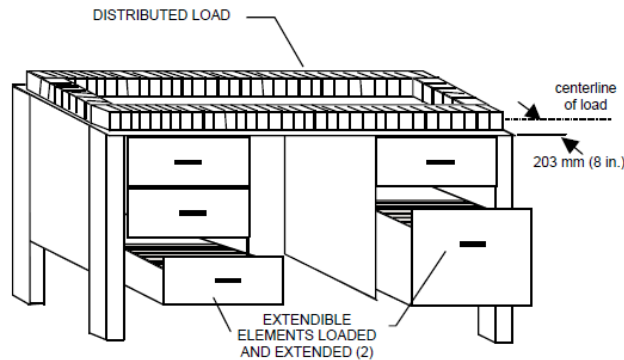
Distance of the load disk (305 mm diameter) center from the table edge: 178 mm

Length of sample: 1050 mm

Total load applied (kg)	Concentrated load (kg)	Time of test (minutes)	Force required to extract the extendible elements (N)	Rating
91	91	60	22.1	P

Note: The load is determined according table 1 and 2. Force required to extract the extendible elements is not greater than 50 N.

Distributed Functional Load Test ANSI/BIFMA X5.5:2021 Par. 5.3



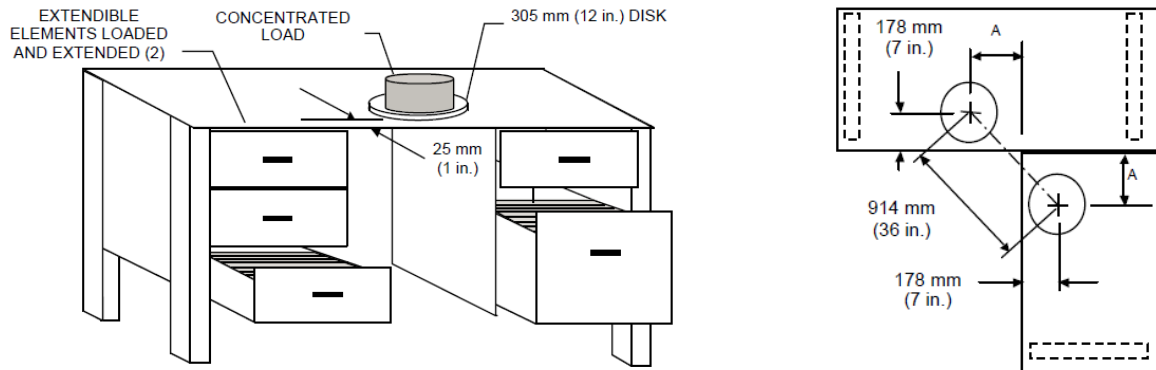
Height from the floor: 740 mm
Perimeter of sample: $(1050 + 615) \times 2 = 3330$ mm
Distance of centerline of load from the edge: 203 mm

Total load applied (kg)	Load applied (kg)	Time of test (minutes)	Force required to extract the extendible elements (N)	Rating
470 kg/m ³ on extendible elements	0.027 kg/mm of perimeter	60	-	NA

Note: The load is determined according table 1 and 2.. Force required to extract the extendible elements is not greater than 50 N.

This test does not apply since the top perimeter is less than 3378 mm of perimeter.

Concentrated Proof Load Test ANSI/BIFMA X5.5:2021 Par. 5.4



Height from the floor: 740 mm

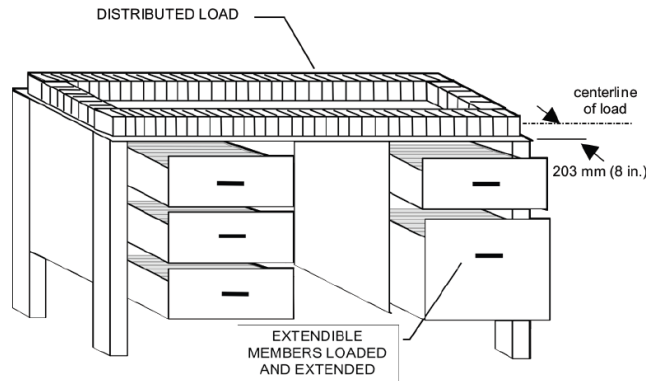
Distance of the load disk (305 mm diameter) center from the table edge: 178 mm

Length of sample: 1050 mm

Total load applied (kg)	Load Concentrated (kg)	Time of test (minutes)	Force required to extract the extendible elements (N)	Rating
136	136	15	23.2	P

Note: The load is determined according table 1 and 2. Force required to extract the extendible elements is not greater than 50 N.

Distributed Proof Load Test ANSI/BIFMA X5.5:2021 Par. 5.5



Height from the floor: 740 mm
Perimeter of sample: (1050 + 615) x 2 = 3330 mm
Distance of centerline of load from the edge: 203 mm

Total load applied (kg)	Load applied (kg)	Time of test (minutes)	Force required to extract the extendible elements (N)	Rating
720 kg/m ³ on extendible elements	0.041 kg/mm of perimeter	15	-	NA

Note: The load is determined according table 1 and 2. Force required to extract the extendible elements is not greater than 50 N.

This test does not apply since the top perimeter is less than 3378 mm of perimeter.

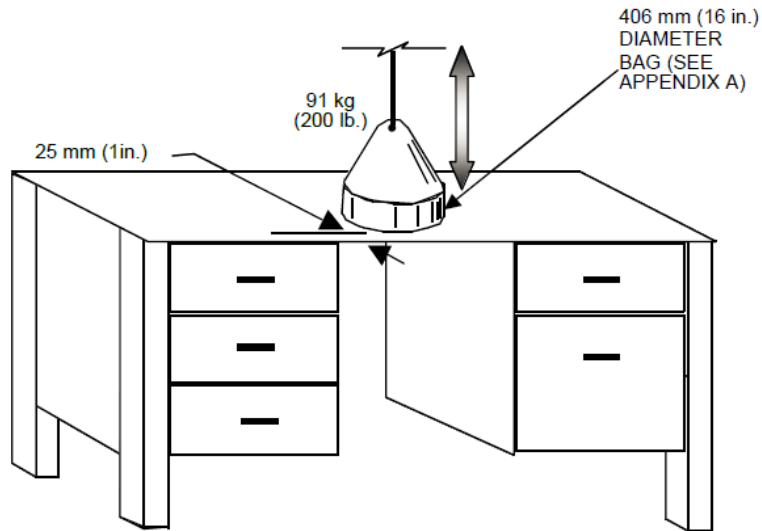
Extendible Element Static Load Tests ANSI/BIFMA X5.5:2021 Par. 5.7

Extendible element	Load applied (kg)	Step	Time of test (minutes)	Rating
	Uniformly distribute a proof load - Table 1			
A	13	Close	15	P
A	13	Open	15	P
B	13	Close	15	P
B	13	Open	15	P

Note: 720 kg/m³ (0.026lb./in.³)

Extendible element internal dimensions 358 x 464 x 110 mm
 Distributed functional load (according table 1): 720 kg/m³ (0.026lb./in.³)
 Functional load calculated according table 1: 13.15 kg (13 kg rounded)

Top Load Ease Cycle Test ANSI/BIFMA X5.5:2021 Par. 6



Height from the floor: 740 mm

Depth of the top: 615 mm (

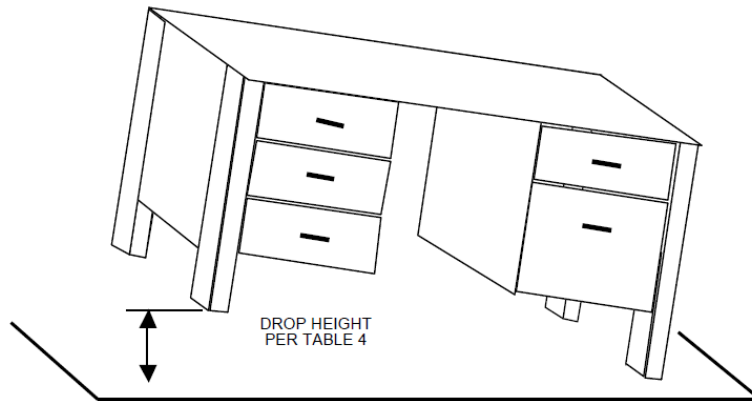
Distance between the bag and the edge: 25 mm

Height at which the surface is set to perform the test: 740 mm

Weight the bag of test (kg)	Total load applied (kg)	N° cycles	Frequency cycles (cycles/minute)	Force required to extract the extendible elements (N)	Rating
91	91	10.000	10	20.1	P

Note: Force required to extract the extendible elements is not greater than 50 N. The load is determined according table 1 and 2.

Desk/Table Unit Drop Test ANSI/BIFMA X5.5:2021 Par. 7



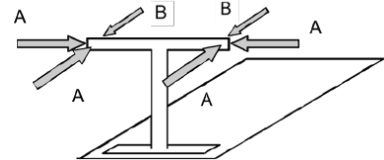
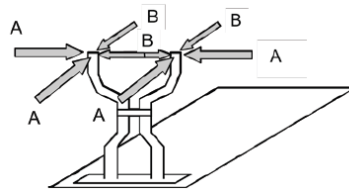
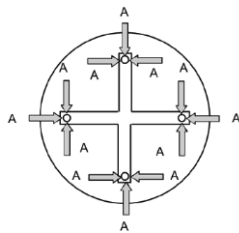
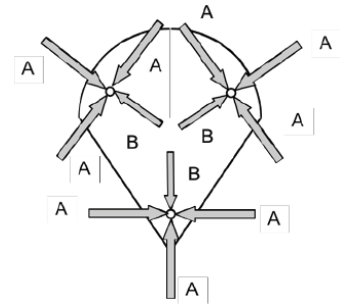
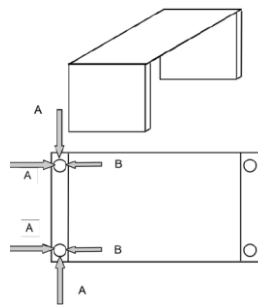
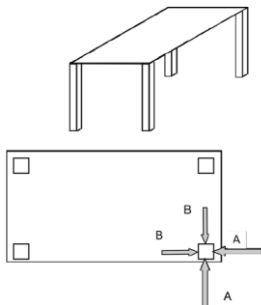
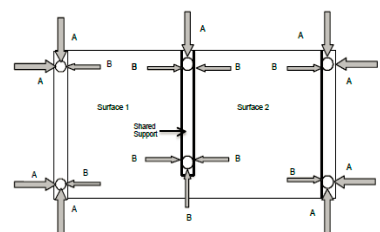
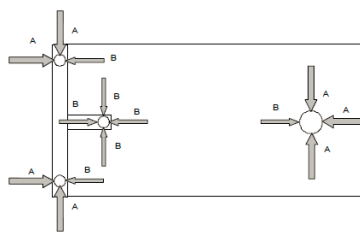
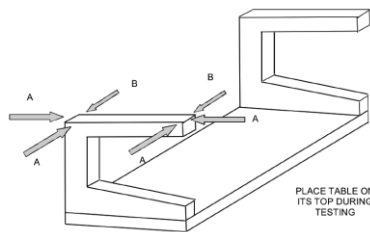
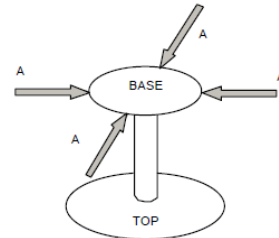
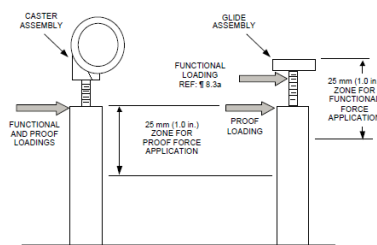
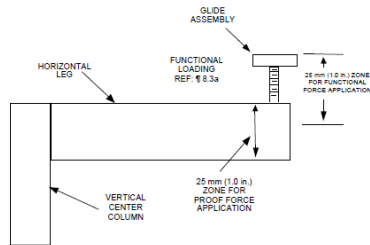
Length of sample: 1050 mm

Weight of sample: 25,5 kg

Weight of sample (kg)	Drop height (mm)	N° cycle	Force required to extract the extendible elements (N)	Rating
< 45	180	1 + 1	-	NA
45 - 90	120	1 + 1	-	NA
> 90 – 136	60	1 + 1	-	NA
> 136	-	-	-	NA

Note: Test is not applicable as the length is less than 1829 mm

Leg Strength Test - Standard ANSI/BIFMA X5.5:2021 Par. 8.2





TEST REPORT: 4791224055.1

Issued on: 28/5/2024

Distance of the load point measured from the top of the leg: 25 mm

Functional Test Procedure ANSI/BIFMA X5.5:2021 Par. 8.3

Category	Weight (kg)	Force calculation formula (Af)	Force calculated (Af) (N)	Force applied (Af) (max. 445 N) (N)	Force calculation formula (Bf)	Force applied (Bf) (N)	Force required to extract the extendible elements (N)	Rating
I	25.5	$0,5 \times (\text{Weight}) \times 9.8 + 222$	346.95	346.95	$0.5 \times A_F$	173.475	20.7	P
II / III	-	$0,5 \times (\text{Weight}) \times 9.8 + 44$	-	-	$0.5 \times A_F$	-	-	NA

Note:

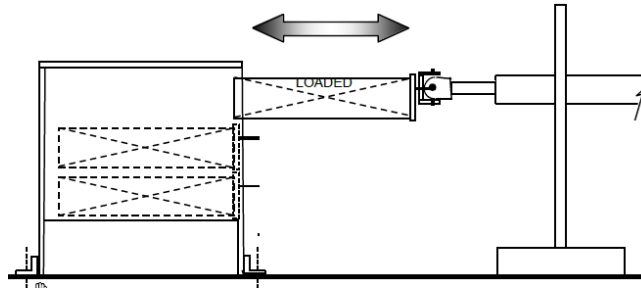
Proof Test ANSI/BIFMA X5.5:2021 Par. 8.5

Category	Weight (kg)	Force calculation formula (Ap)	Force calculated (Ap) (N)	Force applied (Ap) (max. 668 N) (N)	Force calculation formula (Bp)	Force applied (Bp) (N)	Force required to extract the extendible elements (N)	Rating
I	25.5346.95	$1.5 \times [0.5 \times (\text{Weight}) \times 9.8 + 222]$	520.425	260.212	$0.5 \times A_P$	130.106	20.7	P
II / III	-	$1.5 \times [0.5 \times (\text{Weight}) \times 9.8 + 44]$	-	-	$0.5 \times A_P$	-	-	NA

Note:

Extendible Element Cycle Test ANSI/BIFMA X5.5:2021 Par. 10

Cycle Test for Extendible Elements Deeper Than Wide ANSI/BIFMA X5.5:2021 Par. 10.2



Interlock Strength Test - Before the test		
Load applied on the element extendible (kg)	Force applied (N)	Rating
-	133	NA

Note: Interlock system not provided.

Pull Force Test - Before the test		
Load applied on the element extendible (kg)	Force applied (N)	Rating
8.5	50	P

Note:

Pull Force Test - After the test		
Load applied on the element extendible (kg)	Force applied (N)	Rating
8.5	50	P

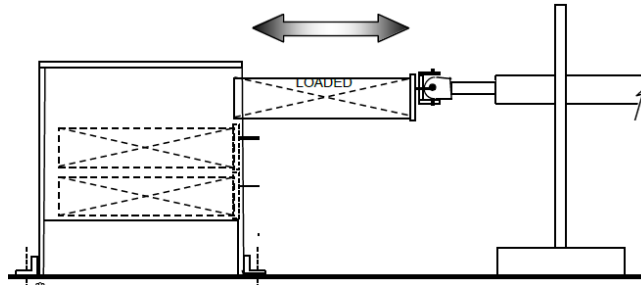
Note:

Interlock Strength Test - After the test		
Load applied on the element extendible (kg)	Force applied (N)	Rating
-	133	NA

Note: Interlock system not provided.

Extendible element internal dimensions 358 x 464 x 110 mm
 Distributed functional load (according table 1): 470 kg/m³ (0.017 lb./in.³)
 Functional load calculated according table 1: 8.588 kg (8.5 kg rounded)

Cycle Test for Extendible Elements Wider Than Deep ANSI/BIFMA X5.5:2021 Par. 10.3



Interlock Strength Test - Before the test		
Load applied on the element extendible (kg)	Force applied (N)	Rating
-	133	NA

Note: Interlock system not provided.

Pull Force Test - After the test		
Load applied on the element extendible (kg)	Force applied (N)	Rating
-	50	NA

Note:

Single pull > 33% extendible element width and less than 457 mm [18 in.] in width (wide width pulls)				
Step	Load applied on the element extendible (kg)	Frequency (cycles /minute)	Cycles	Rating
At center of pull	8.5	10	30.000	P
At Right Hand position		10	10.000	P
At Left Hand position		10	10.000	P

Note: extendible element width= 415 mm;

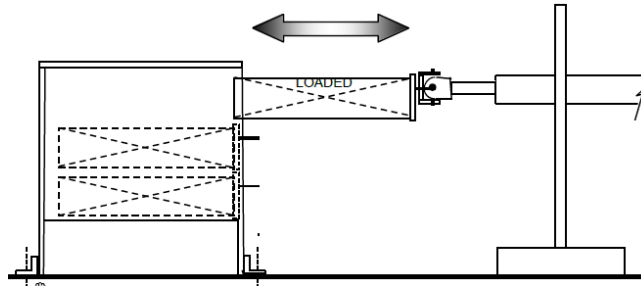
Pull Force Test - After the test		
Load applied on the element extendible (kg)	Force applied (N)	Rating
8.5	50	P

Note:

Interlock Strength Test - After the test		
Load applied on the element extendible (kg)	Force applied (N)	Rating
-	133	NA

Note: Interlock system not provided.

Cycle Test for Low Height Drawers ANSI/BIFMA X5.5:2021 Par. 10.4



Pull Force Test - Before the test		
Load applied on the element extensible (kg)	Force applied (N)	Rating
-	50	NA

Note: height of drawer 5 in

Load applied on the element extensible (kg)	Frequency (cycles /minute)	Cycles	Rating
-	8 -16	10.000	NA

Note: height of drawer 5 in

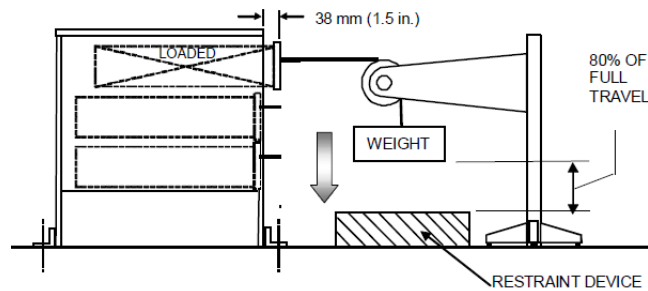
Pull Force Test - After the test		
Load applied on the element extensible (kg)	Force applied (N)	Rating
-	50	NA

Note: height of drawer 5 in

**Extendible Element Retention Impact and Durability (Out Stop) Tests
ANSI/BIFMA X5.5:2021 Par. 11**

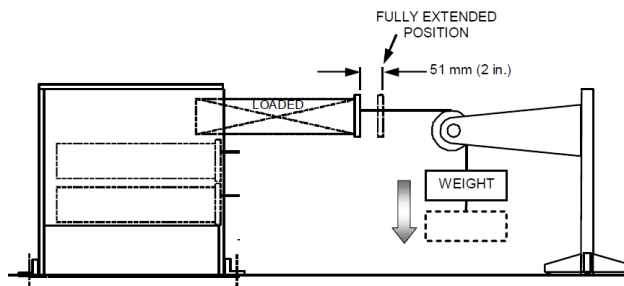
Pull Force Test - Before the test		
Load applied on the element extensible (kg)	Force applied (N)	Rating
8.5	50	P

Note:



Impact test					
Load applied on the element extensible (kg)	Minimum weight that causes the extendible element to open to its full extension from 38mm from fully closed (kg)	Weight to add (kg)	Weight of test (mass to move the door + 2.3 kg) (kg)	Number of cycles (without resetting air gaps) from fully closed, with restrained weight	Rating
8.5	2.11	2.3	4.41	5	P

Note:



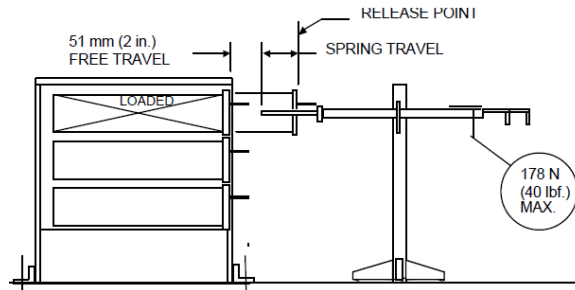
Durability test				
Load applied on the element extensible (kg)	Weight Test (kg)	Number of cycles with drawer 51 mm from its fully open position and not restrained weight	Frequency (cycles/minute)	Rating
8.5	4.41	15.000	10	P

Note:

Pull Force Test - After the test		
Load applied on the element extensible (kg)	Force applied (N)	Rating
2.14	50	P

Note:

Extendible Element Rebound Test ANSI/BIFMA X5.5:2021 Par. 12



Pull Force Test - Before the test		
Load applied on the element extensible (kg)	Force applied (N)	Rating
8.5	50	P

Note:

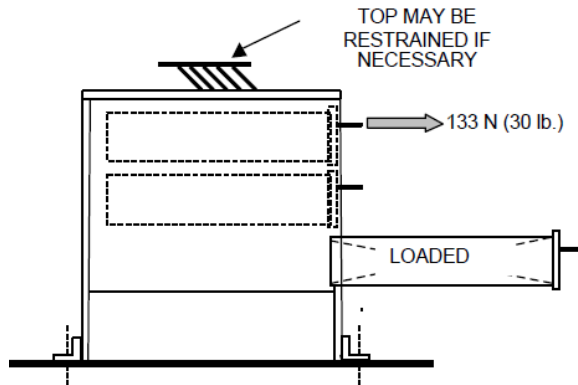
Load applied on the element extensible (kg)	Force applied (N)	Distance of the drawer from the fully closed position after the test (mm)	Maximum distance of the drawer from the fully closed position after the test (mm)	Cycles	Rating
8.5	178	0	38	1	P
8.5	178	0	38	2	P
8.5	178	0	38	3	P
8.5	178	0	38	4	P
8.5	178	0	38	5	P

Note: extendible element weight = 5 kg;

Pull Force Test - After the test		
Load applied on the element extensible (kg)	Force applied (N)	Rating
8.5	50	P

Note:

Interlock Strength Test ANSI/BIFMA X5.5:2021 Par. 13

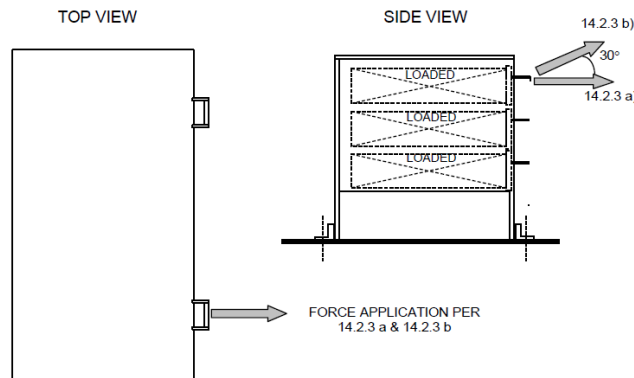


Interlock Strength Test		
Load applied on the element extensible (kg)	Force applied (N)	Rating
-	133	NA

Note: Interlock system not provided.

Lock Tests ANSI/BIFMA X5.5:2021 Par. 14

Force Test for Extendible Element Locks ANSI/BIFMA X5.5:2021 Par. 14.2



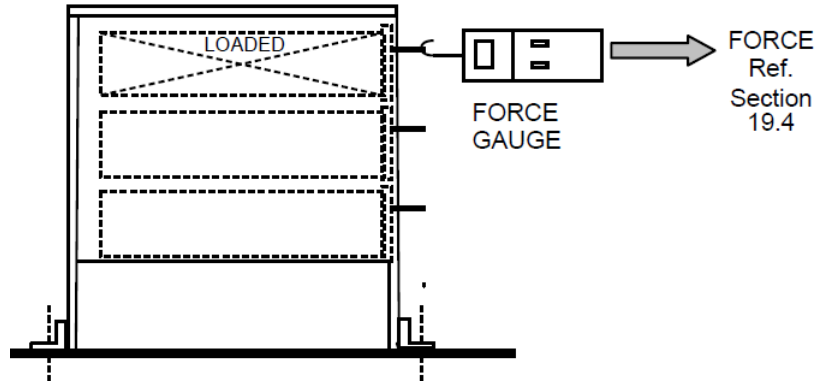
Pull Force Test - Before the test		
Load applied on the element extensible (kg)	Force applied (N)	Rating
-	50	NA

Note: extendibles element not lockable.

Wide Pull > 33% of extendible element/door front width or height and greater than 457 mm (18 in.) in width					
Step	Distance from the right edge (mm)	Load applied on the element extensible (kg)	Direction of applied force	Force (N)	Rating
Center of pull area	207.5	-	At 90° to the front of the element	222	NA
			At 30° upwards	222	NA
Right hand edge	-		At 90° to the front of the element	222	NA
			At 30° upwards	222	NA
Left hand edge	-		At 90° to the front of the element	222	NA
			At 30° upwards	222	NA

Note: front width of extendible element = 415 mm (< 457 mm).

Pull Force Test ANSI/BIFMA X5.5:2021 Par. 19



Component	Load applied on the component (kg)	Force applied (N)	Rating
Doors	-	50	NA
Extendible elements	2.11	50	P

Note: One cycle is defined as travel from 0 to 6 mm of the closed position to 0 to 6 mm of the fully extended / open position and return.

Key:

- P** = PASS, the sample MEETS the standard requirement.
- F** = FAIL, the sample DOES NOT MEET the standard requirement.
- NA** = NON APPLICABILE, the requirement/test IS NOT APPLICABLE to the sample.
- NR** = NOT REQUESTED, On Customer request the test is NOT PERFORMED.
- NP** = General note (see details).
- ND** = NOT DECLARED.
- //** = The rating of test CANNOT BE EXPRESSED, see details in test report

END OF TEST REPORT