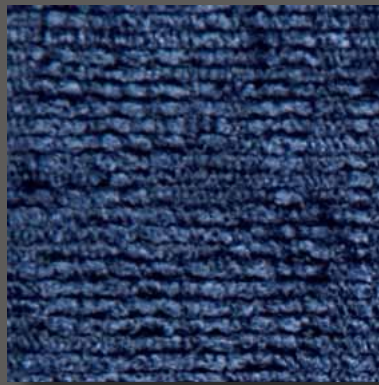




Darcy
615 Berry



Darcy
105 Indigo



Darcy
791 Mocha



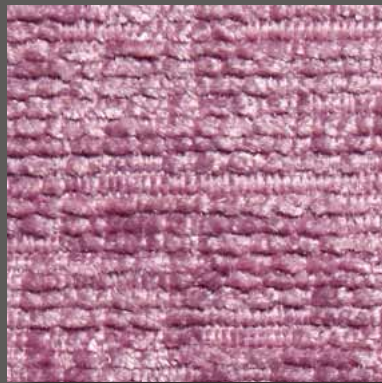
Darcy
226 Lime



Darcy
129 Ocean



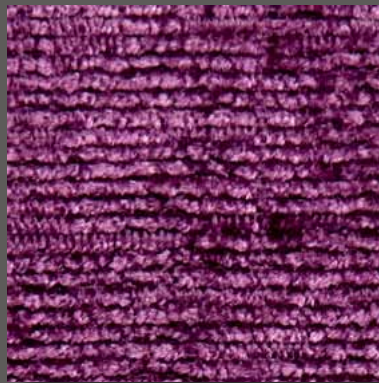
Darcy
804 Fawn



Darcy
664 Mauve



Darcy
644 Cerise



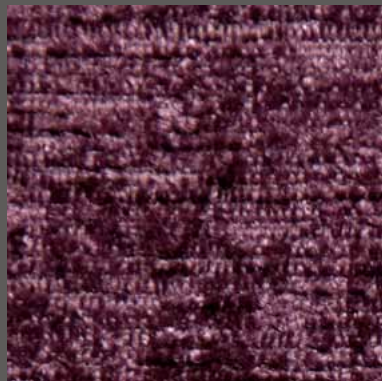
Darcy
412 Purple



Darcy
300 Gold



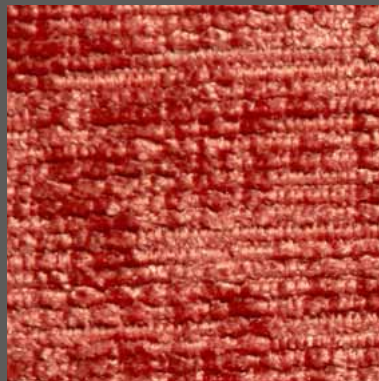
Darcy
233 Pistachio



Darcy
509 Plum



Darcy
467 Bordeaux



Darcy
411 Spice



Darcy
911 Steel

Darcy

TECHNICAL INFORMATION

Composition:	100% Polyester with Microporous Film and FR Coating
Weight:	485 g/m ² +/- 5%
Width:	140cm (55")
Flammability:	BS7176: Medium Hazard EN1021 Source 1 & 2, BS5852 Source 5 BS5852: 2006 Ignition source 5 EN1021-1/2 CAL TB 116 and 117, NFPA 260 (USA) Marine Standard IMO A.652 (16)
Application:	Contract and heavy domestic upholstery
Abrasion Resistance:	40,000 Martindale rubs 65,000 Wyzenbeek DR
Waterproof:	Hydrostatic head >1 metre
Colour Fastness to Light:	Grade 5
Colour Fastness to Rubbing:	Dry <4 Wet <3/4
Additional:	Anti-microbial and Anti-fungal with a stain resistant finish
Recommended Cleaning:	<ul style="list-style-type: none"> Upholstered furniture should be vacuumed/cleaned regularly to remove dust/surface grit particles and prevent build-up of soiling. Take care not to cause abrasive damage. Most stains can be removed by wiping clean. Microfibre cloths are extremely effective without soap, which is helpful as soap can clog your fabric. Remove spillages promptly (within 15 mins) with an absorbent dry cloth. For heavier soiling use a soft brush with care to avoid abrasive damage to surface and tepid soapy water (non-alkaline). Rinse clean with water ensuring product residues are removed as this inhibits the stain repellent. Dry with an absorbent cloth. Bodily fluids should be removed promptly with cold water and then cleaned as above. Water and oil based stains may be removed by using most water based household proprietary spray cleaning agents, following instructions carefully. Extreme soiling may be cleaned with a 5% Sodium Chlorite (bleach) solution. Do not machine wash, fully immerse or dry clean. Do not apply other chemicals to the fabric.

Continuity: Although every effort is made to ensure that fabrics ordered match the colours in this pattern card, slight variations may occur from batch to batch.

Please note Panaz reserve the right to update product specification at their discretion.



Innovation in contract fabrics

For further information please visit
www.pamaz.com



BS5852
CRIB 5
EN1021/2



BV 0062



Upholstery



Flame Retardant
To Crib 5



Waterproof



Anti-Microbial
Anti-Fungal



Stain Resistant

Collection
Darcy
TO IGNITION SOURCE 5

Head Office.
Panaz Ltd, Spring Mill, Fence,
Near Burnley,
Lancashire. BB12 9HP
England
Tel: +44 (0) 1282 696969
Fax: +44 (0) 1282 611519
email: admin@panaz.co.uk

Panaz France
7 rue Ferdinand Fabre,
75015 Paris
(Métro Convention - Ligne 12)
France
Tel: +33 (0) 1 40 25 05 07
Fax: +33 (0) 1 40 25 09 64
email: patrick.martinez@noos.fr

Panaz Germany
Nortzstrasse 20
67152 Ruppertsberg
Germany
Tel: +49 6326 967 528
Fax: +49 6326 980 553
email: Uwe.Ney@t-online.de

Panaz (USA) Inc
2102 Business Center Drive
Suite 215B
Irvine, CA 92612
USA
Tel: +1 949 253 4163
Fax: +1 949 253 4167
email: sales@panaz.com