



Upholstery

Flame Retardant

750,000

MARTINDALE RUBS

Abrasion

Waterproof

OUTDOOR

INDOOR

Outdoor & Indoor
Excluding Advantage 7

Anti-Microbial

Stain Resistant

Phthalate Free

Heavy Metals
Free

LATEX
FREE

Products feature the above attributes

ASTON, BROOKLAND & CADET

DESIGN	COMPOSITION	APPLICATION	WEIGHT	WIDTH	ABRASION	BURST STRENGTH	COLOUR FASTNESS TO LIGHT	COLOUR FASTNESS TO WEATHERING	COLOUR FASTNESS TO CHLORINATED WATER	COLOUR FASTNESS TO SEAWATER	WATERPROOF	FLAMMABILITY RATINGS										
												IMO: FTP 2010 Part 8	CAL TB 117	NFPA 280 USA	M2 France	EN 1021-1/2	BS5952 2006 Ignition Source 5	BS7176 Medium Hazard	Hydrostatic Head			
ASTON	Coating: PVC/PU Blend Basecloth: Cotton/Polyester	Contact & Heavy Domestic Upholstery	•	Approx 730g/m² +/-5%	Approx 140cms (55")	750,000 Martindale Rubs 100,000 Wyzenbeek DR	1765 kPa	Grade 6+	Grade 7	Grade 4-5	Dry >4 Wet >4	20+	•	•	•	•	•	•	•	•	•	•
BROOKLAND			•	Approx 720g/m² +/-5%	Approx 140cms (55")	750,000 Martindale Rubs 100,000 Wyzenbeek DR	1824 kPa	Grade 6+	Grade 7	Grade 4-5	Grade 4-5	Wet >4 Dry >4	20+	•	•	•	•	•	•	•	•	•
CADET ZEST	Coating: PVC/PU Blend Basecloth: Viscose/Polyester		•	Approx 800g/m² +/-5%	Approx 137cms (54")	350,000+ Martindale Rubs 100,000 Wyzenbeek DR	1738 kPa	Grade 6+	Grade 8	Grade 4-5	Grade 4-5	Wet >4 Dry >4	20+	•	•	•	•	•	•	•	•	•

PRODUCT PROPERTIES

1

2

3

4

5

BEAUTIFUL & DURABLE

1. **Anti-Microbial shield^{plus} Protection** - Permanently inhibits the broadest spectrum of microbes (even C diff spore) and prevents nasty odours.

2. **Acryltron™** - Affording exceptional, improved resistance to cleaning chemicals.

3. **Polyurethane coating** - For durability and stain resistance.

4. **PVC Core** - For core strength and durability.

5. **Substrate** - Woven or knitted to suit the application.

LATEX FREE

RECOMMENDED CLEANING

✓

Wipe clean routinely with a microfibre cloth lightly dampened with cold water only and then dry with a clean absorbent cloth.

✓

Soak up spillages as soon as possible with an absorbent dry cloth to prevent staining.

✓

If soiling has accumulated use a mild proprietary cleaner (non-alkaline). Take care to remove all soap residues and dry with a clean absorbent cloth.

✓

Remove body fluids and extreme soiling immediately (within 15 minutes) with cold water then apply approved infection control protocol: Haz Tabs, Chlor Clean or Shield Plus etc. As the concentration of bleach can vary greatly among proprietary brands we recommend these be avoided. Remove product residues and then dry with a clean absorbent cloth.

✗

Do not tumble dry.

✗

Do not dry clean.

✗

Do not fully immerse in water.

✗

Do not apply solvents, alcohol or any other chemical cleaners.

✗

Do not steam clean - heat seals in stains.

Note dyes and pigments from indigo jeans, ball point and felt tip pens may permanently stain.

CONTINUITY

Although every effort is made to ensure that fabrics ordered match the colours in this pattern card, slight variations may occur from batch to batch.

Please note Panaz reserve the right to update product specification at their discretion.

HAVEN

COMPOSITION	APPLICATION	WEIGHT	WIDTH	ABRASION	BURST STRENGTH	COLOUR FASTNESS TO LIGHT	COLOUR FASTNESS TO ARTIFICIAL WEATHERING	COLOUR FASTNESS TO CHLORINATED WATER	COLOUR FASTNESS TO SEAWATER	WATERPROOF	FLAMMABILITY RATINGS										
											IMO FTP 2010 Part 8	NFPA 280 USA	B1 Germany	M2 France	EN 1021-1/2	BS5952 2006 Ignition Source 5	BS7176 Medium Hazard	BS5952 2006 Ignition Source 5	EN 1021-1/2	BS5952 2006 Ignition Source 5	BS7176 Medium Hazard
Coating: PVC/PU blend Basecloth: Polyester/ Viscose	•	750g/m² +/-5%	Approx 140cms (55")	300,000 Martindale Rubs 200,000 Wyzenbeek D.R	>800 KPa	Grade 6+	Grade 6-7	Grade 4-5	Grade 4-5	Wet>4 Dry>4	15+	•	•	•	•	•	•	•	•	•	•

PRODUCT PROPERTIES

1

2

3

4

BEAUTIFUL & DURABLE

1. **Anti-Microbial Protection** - Permanently inhibits the broadest spectrum of microbes and prevents nasty odours.

2. **Polyurethane coating** - For durability and stain resistance.

3. **PVC Core** - For core strength and durability.

4. **Substrate** - Woven or knitted to suit the application.

LATEX FREE

RECOMMENDED CLEANING

✓

Wipe clean routinely with a microfibre cloth lightly dampened with cold water only and then dry with a clean absorbent cloth.

✓

Soak up spillages as soon as possible with an absorbent dry cloth to prevent staining.

✓

If soiling has accumulated use a mild proprietary cleaner (non-alkaline). Take care to remove all soap residues and dry with a clean absorbent cloth.

✓

Remove body fluids and extreme soiling immediately (within 15 minutes) with cold water then apply approved infection control protocol: Haz Tabs, Chlor Clean or Shield Plus etc. As the concentration of bleach can vary greatly among proprietary brands we recommend these be avoided. Remove product residues and then dry with a clean absorbent cloth.

✗

Do not tumble dry.

✗

Do not dry clean.

✗

Do not fully immerse in water.

✗

Do not apply solvents, alcohol or any other chemical cleaners

✗

Do not steam clean - heat seals in stains.

Note dyes and pigments from indigo jeans, ball point and felt tip pens may permanently stain.

CONTINUITY

Although every effort is made to ensure that fabrics ordered match the colours in this pattern card, slight variations may occur from batch to batch.

Please note Panaz reserve the right to update product specification at their discretion.

Indoor/Outdoor Vinyl Upholstery

Indoor/Outdoor Vinyl Upholstery with **Acryltron™** Protective Coating

ADVANTAGE 7

COMPOSITION	APPLICATION	WEIGHT	WIDTH	ABRASION	BURST STRENGTH	COLOUR FASTNESS TO LIGHT	COLOUR FASTNESS TO RUBBING	WATERPROOF	FLAMMABILITY RATINGS		
									B1 Germany	M1 France	BS5952 2006 Ignition Source 7
Coating: PVC/Acryltron Basecloth: Cotton	•	Approx 810g/m² +/-5%	Approx 140cms (55")	100,000+ Martindale Rubs	1202 kPa	Grade 6+	Dry 4-5 Wet 4-5	14m	•	•	•

PRODUCT PROPERTIES

1

2

3

4

BEAUTIFUL & DURABLE

1. **Anti-Microbial Protection** - Permanently inhibits the broadest spectrum of microbes and prevents nasty odours.

2. **Acryltron™** - Affording exceptional, improved resistance to cleaning chemicals.

3. **PVC Core** - For core strength and durability.

4. **Substrate** - Woven or knitted to suit the application.

LATEX FREE

RECOMMENDED CLEANING

✓

Wipe clean routinely with a microfibre cloth lightly dampened with cold water only and then dry with a clean absorbent cloth.

✓

Soak up spillages as soon as possible with an absorbent dry cloth to prevent staining.

✓

If soiling has accumulated use a mild proprietary cleaner (non-alkaline). Take care to remove all soap residues and dry with a clean absorbent cloth.

✓

Remove body fluids and extreme soiling immediately (within 15 minutes) with cold water then apply approved infection control protocol: Haz Tabs, Chlor Clean or Shield Plus etc. As the concentration of bleach can vary greatly among proprietary brands we recommend these be avoided. Remove product residues and then dry with a clean absorbent cloth.

✗

Do not tumble dry.

✗

Do not dry clean.

✗

Do not fully immerse in water.

✗

Do not apply solvents, alcohol or any other chemical cleaners.

✗

Do not steam clean - heat seals in stains.

Note dyes and pigments from indigo jeans, ball point and felt tip pens may permanently stain.

CONTINUITY

Although every effort is made to ensure that fabrics ordered match the colours in this pattern card, slight variations may occur from batch to batch.

Please note Panaz reserve the right to update product specification at their discretion.

© Panaz own the copyright of all designs shown in this pattern card, any infringement of which will be actioned by law.

Head Office
Panaz Ltd,
Bentley Wood Way
Hapton, Burnley
Lancashire, BB11 5ST
England
Tel: +44 (0)1282 696969
email: sales@panaz.co.uk

www.panaz.com

Manufactured by
Pamaz®
For

Pineapple

Pineapple, Westmead, Aylesford,
Maidstone, Kent, ME20 6XJ
Tel: +44 (0)1622 237830
email: sales@pineapplecontracts.com

www.pineapplecontracts.com

with **Acryltron™**
Protective Coating

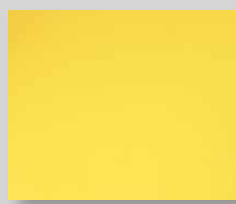
Pamaz USA Inc.
Access Office Business Center
8801 East Park Drive
Suite 301
Raleigh, NC 27617
USA
Tel: +1 919 747 8211
Fax: +1 919 870 9045
email: sales@panaz.com

PZ 03/20

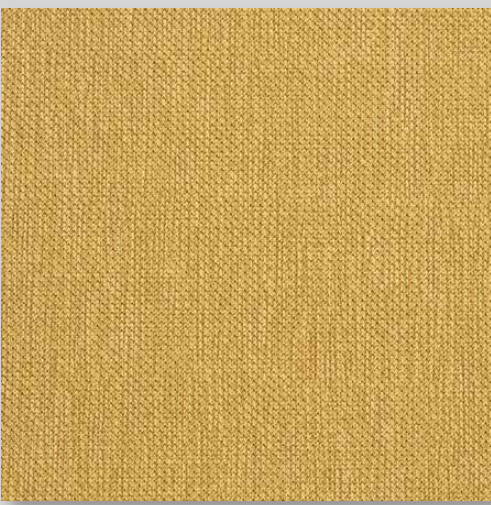
Pineapple



*Ryno®
Vegas Yellow



Cadet Zest
303 Lemon LRV 61.4



Aston
238 Citrus LRV 48.3

Haven
300 Gold LRV 40.9



Aston
314 Mustard LRV 37.5

Advantage 7
238 Citrus LRV 47.8



*Ryno®
Blaze Orange



Aston
401 Amber LRV 22.2



Cadet Zest
438 Tangerine LRV 29.5



Advantage 7
402 Orange LRV 27.3



Haven
401 Amber LRV 22.0



*Ryno®
Lime Green



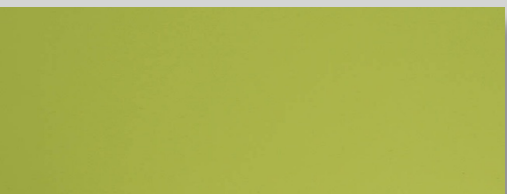
Haven
222 Apple LRV 23.3



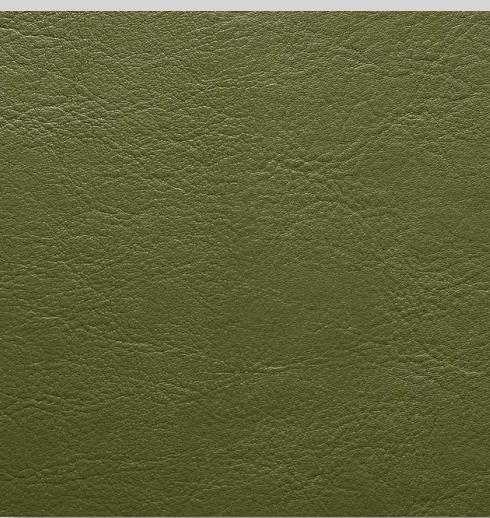
Cadet Zest
209 Wasabi LRV 21.5



Haven
238 Citrus LRV 40.8



Cadet Zest
222 Apple LRV 29.0



Advantage 7
220 Light Green LRV 26.7

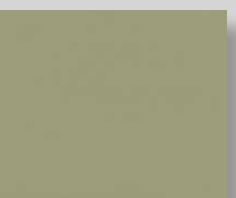
Aston
220 Light Green LRV 23.1



*Ryno®
Cool Green



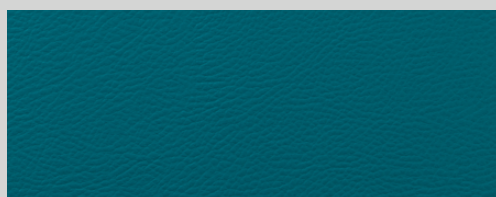
Aston
253 Cardamom LRV 33.7



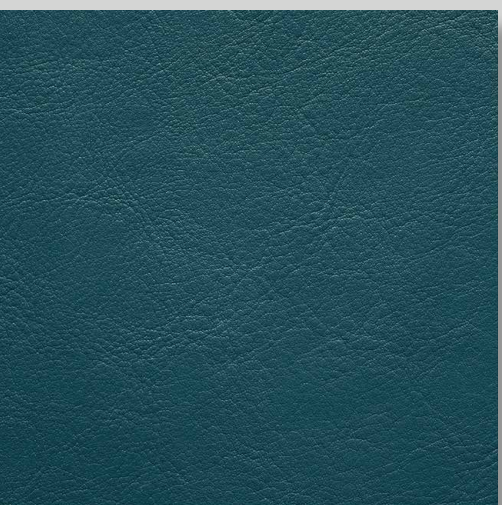
Cadet Zest
204 Moss LRV 28.3



Aston
251 Eau de Nil LRV 25.7



Advantage 7
151 Teal LRV 10.7



Aston
151 Teal LRV 8.8



Haven
252 Willow LRV 16.4



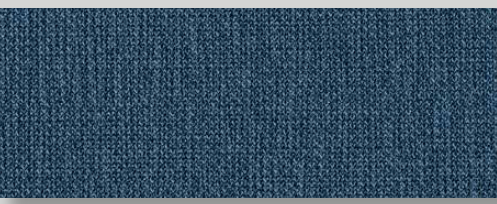
Advantage 7
253 Cardamom LRV 36.0



*Ryno®
Epic Blue



Cadet Zest
104 Cobalt LRV 10.8



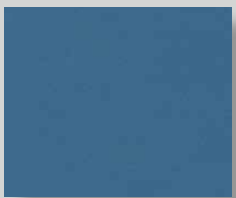
Haven
129 Ocean LRV 7.4



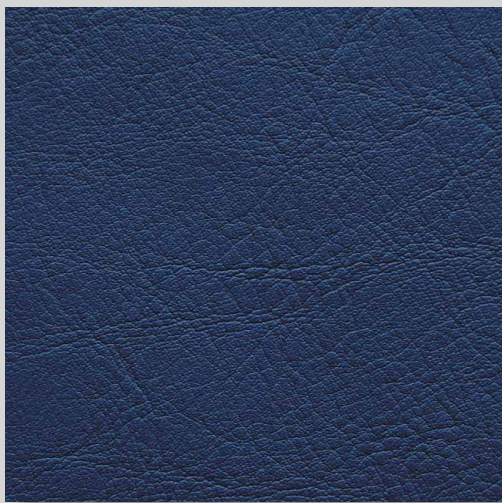
Cadet Zest
124 Electric Blue LRV 14.3



Aston
192 Ink LRV 5.0



Cadet Zest
117 Royal LRV 10.8



Aston
100 Blue LRV 6.7

Best Seller



Advantage 7
117 Royal LRV 7.2



*Ryno®
Icon Purple



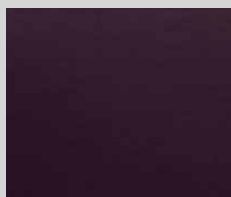
Haven
648 Fig LRV 9.0



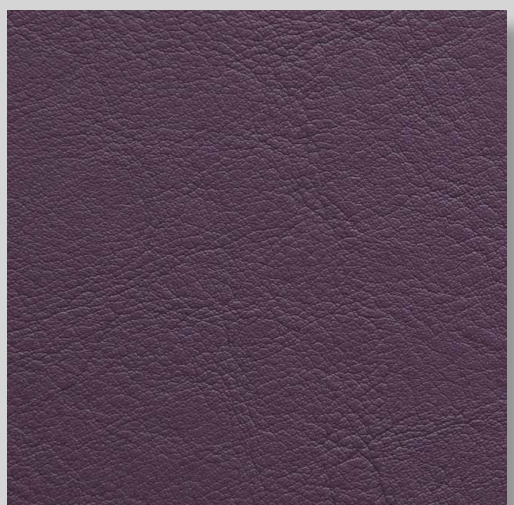
Haven
642 Thistle LRV 13.9



Aston
213 Aubergine LRV 9.7

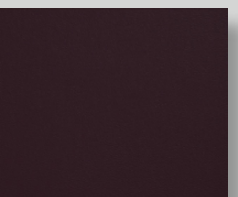


Cadet Zest
509 Plum LRV 5.7



Aston
412 Purple LRV 4.6

Best Seller



Cadet Zest
156 Grape LRV 11.4



Cadet Zest
128 Violet LRV 10.0



*Ryno®
Granite



*Ryno®
Black



Haven
911 Steel LRV 21.8



Aston
906 Ash LRV 17.2



Haven
902 Slate LRV 6.5



Aston
953 Gunmetal LRV 5.6

Best Seller



Advantage 7
954 Graphite LRV 11.0



Aston
904 Pewter LRV 9.1



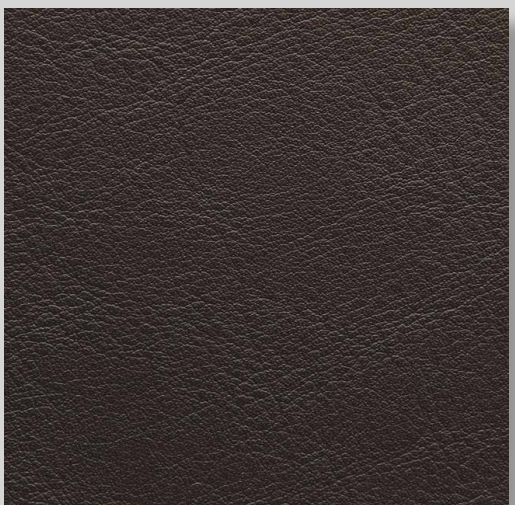
Brookland
904 Pewter LRV 11.3



*Ryno®
Moonwalk Grey

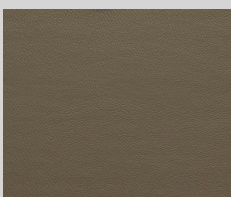


*Ryno®
Thunder Grey



Aston
814 Espresso LRV 3.8

Best Seller



Cadet Zest
703 Mink LRV 16.0



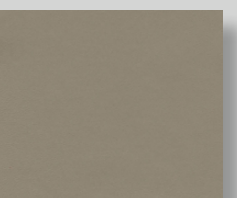
Aston
703 Mink LRV 9.4



Haven
904 Pewter LRV 9.8



Aston
807 Mushroom LRV 6.6



Cadet Zest
858 Cobble LRV 26.3



Haven
705 Cappuccino LRV 9.4



Haven
708 Truffle LRV 15.3