



# TEST REPORT: 4790866004.1

## APPLICANT

**Name:** Pineapple Contracts Unlimited  
**Address:** Westmead  
 Aylesford, ME20 6XJ  
 United Kingdom

**Product:** ANSI/BIFMA X5.5 - RYNO Activity / Dining table



## DATE

**Sample in:** 28/7/2023 (dd/mm/yyyy)  
**Tests start:** 9/1/2024 (dd/mm/yyyy)  
**Tests end:** 15/1/2024 (dd/mm/yyyy)  
**Report issue:** 16/1/2024 (dd/mm/yyyy)

## OVERALL DIMENSIONS:

<b>Measured:</b>	<b>Depth:</b> 1220 mm;	<b>Height:</b> 790 mm;
	<b>Width:</b> 1220 mm;	<b>Weight:</b> 99,3 kg;
<b>Nominal:</b>	<b>Depth:</b> ND;	<b>Height:</b> ND;
	<b>Width:</b> ND;	<b>Weight:</b> ND;
<b>Sample number</b> 6112581	<b>Order Number:</b> 14817788	

## REFERENCE STANDARD

### ANSI/BIFMA X5.5:2014 Desk/Table Products - Tests.

NOTE: clauses considered as not applicable to the product are not listed in this report.

**Sample defects before the test: NO VISIBLE DEFECTS**

Tests have been performed at a temperature of 21 ± 6 °C

The tests have been performed on 1 sample as requested by the customer

The sample has been assembled according to the assembly instructions provided by the customer

The sample is classified as **Category: I** (Tables with surfaces greater than 610 mm in height and have a total work surface area greater than 0.46 m<sup>2</sup>)

**Technician**  
Rodolfo Sala

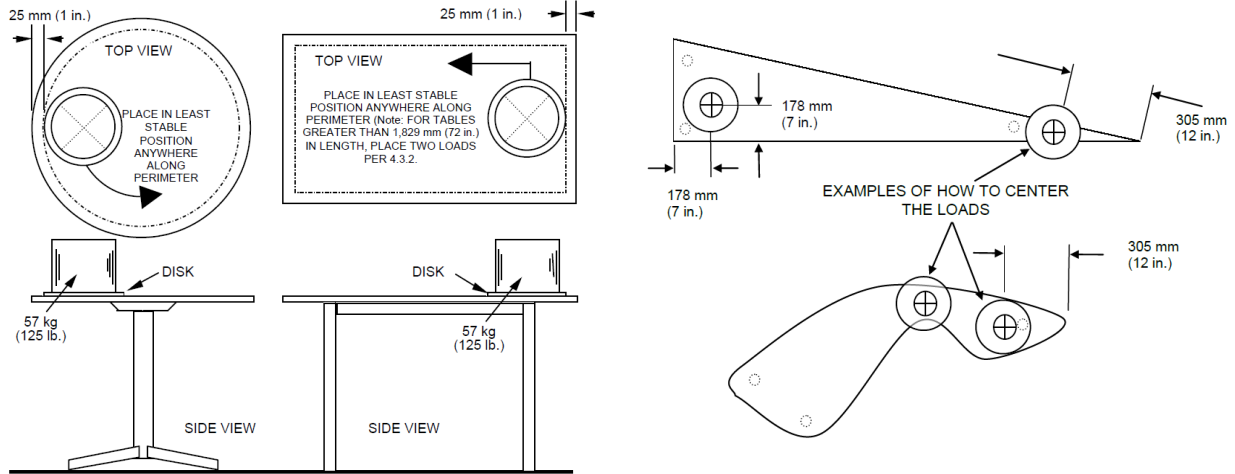
**Laboratory Manager**  
Matteo Longoni

*Note: any copy, even partial, of this report, and any change or alteration to it are strictly forbidden.  
The test results listed in this report are relevant only for the tested sample. Sampling performed by the customer.*

**TEST REPORT: 4790866004.1**

**Issued on:: 16/1/2024**

**Stability Under Vertical Load Test ANSI/BIFMA X5.5:2014 Par. 4.3**



**Height from the floor: 790 mm**

**Distance of the load disk (305 mm diameter) center from the table edge: 178 mm**

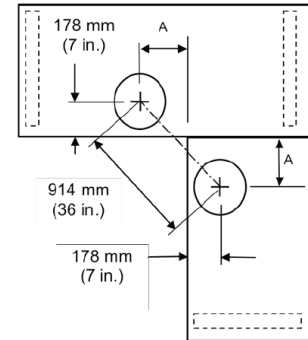
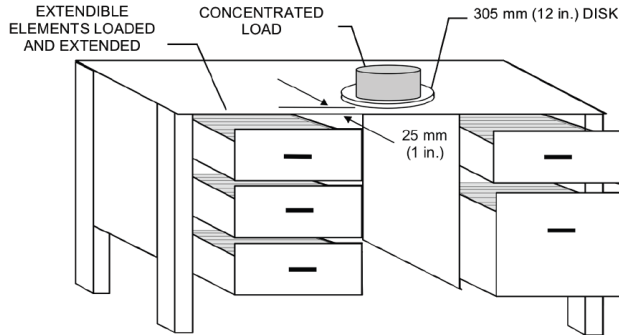
Vertical load (kg)	Rating
57	P

**Note:** Test performed on sample as 2<sup>nd</sup> test on this sample.

**TEST REPORT: 4790866004.1**

**Issued on:: 16/1/2024**

**Concentrated Functional Load Test ANSI/BIFMA X5.5:2014 Par. 5.2**



**Height from the floor: 790 mm**

**Distance of the load disk (305 mm diameter) center from the table edge: 178 mm**

**Length of sample: 1220 mm**

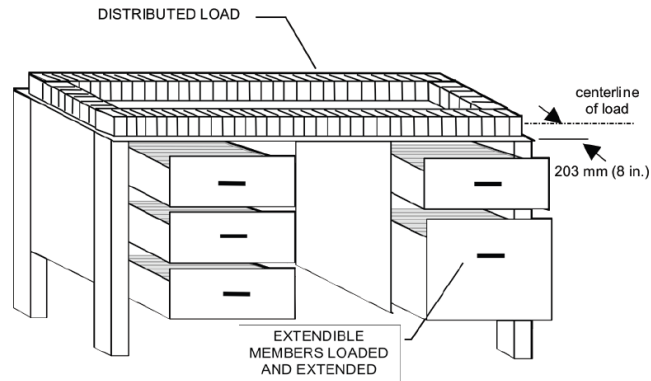
Total load applied (kg)	Load Concentrated (kg)	Time of test (minutes)	Force required to extract the extendible elements (N)	Rating
91	91	60	-	P

**Note:** Test performed on sample as 3<sup>rd</sup> test on this sample.

**TEST REPORT: 4790866004.1**

**Issued on:: 16/1/2024**

**Distributed Functional Load Test ANSI/BIFMA X5.5:2014 Par. 5.3**



**Height from the floor: 790 mm**

**Perimeter of sample:  $(1220 + 1220) \times 2 = 4880$  mm**

**Distance of centerline of load from the edge: 203 mm**

Load applied (kg)	Time of test (minutes)	Force required to extract the extendible elements (N)	Rating
132 (0.027 kg/mm)	60	-	P

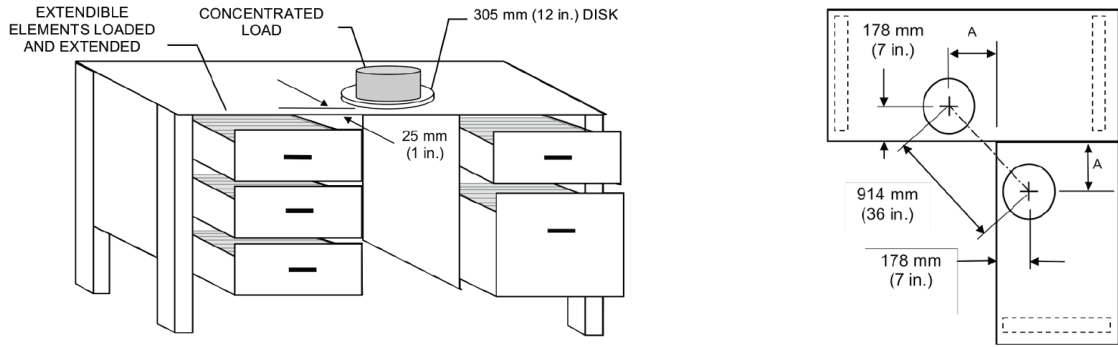
**Note:** The load is determined according table 1.

Test performed on sample as 4<sup>th</sup> test on this sample.

**TEST REPORT: 4790866004.1**

**Issued on:: 16/1/2024**

**Concentrated Proof Load Test ANSI/BIFMA X5.5:2014 Par. 5.4**



**Height from the floor:** 790 mm  
**Distance of the load from the edge:** 25 mm  
**Length of sample:** 1220 mm  
**The concentrated load was applied:** 25 mm from the edge

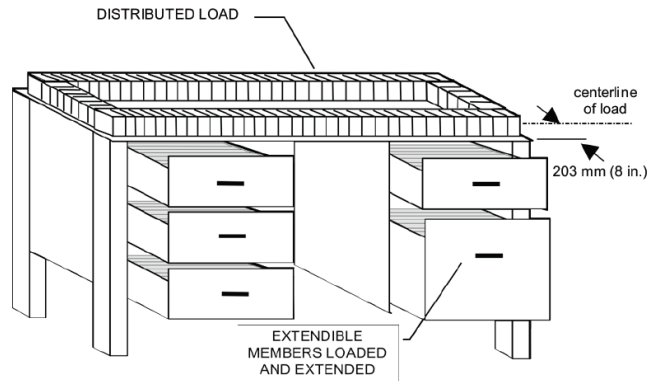
Total load applied (kg)	Load Concentrated (kg)	Time of test (minutes)	Force required to extract the extendible elements (N)	Rating
136	136	15	-	P

**Note:** The load is determined according table 1.  
 Test performed on sample as 5<sup>th</sup> test on this sample.

**TEST REPORT: 4790866004.1**

**Issued on:: 16/1/2024**

**Distributed Proof Load Test ANSI/BIFMA X5.5:2014 Par. 5.5**



**Height from the floor:** 790 mm

**Perimeter of sample:**  $(1220 + 1220) \times 2 = 4880$  mm

**Distance of centerline of load from the edge:** 203 mm

Load applied (kg)	Time of test (minutes)	Force required to extract the extendible elements (N)	Rating
184 (0.041 kg/mm)	15	-	P

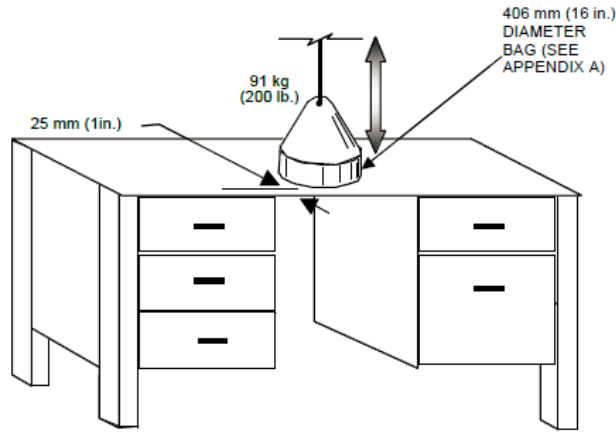
**Note:** The load is determined according table 1.

Test performed on sample as 6<sup>th</sup> test on this sample.

**TEST REPORT: 4790866004.1**

**Issued on:: 16/1/2024**

**Top Load Ease Cycle Test ANSI/BIFMA X5.5:2014 Par. 6**



**Height from the floor:** 790 mm (fixed height)  
**Depth of the top:** 1220 mm  
**Distance between the bag and the edge:** 25 mm

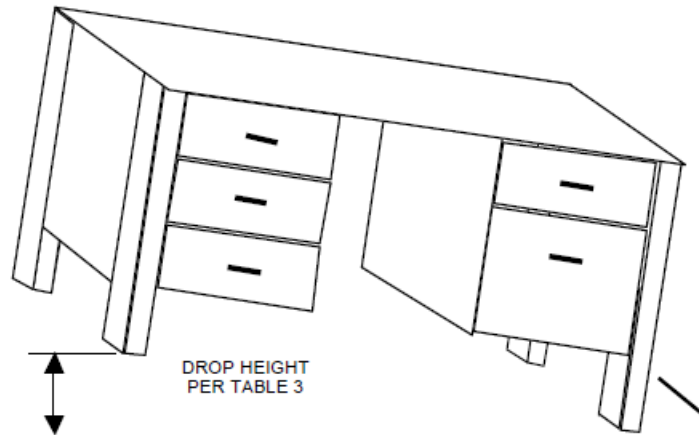
Weight the bag of test (kg)	Total load applied (kg)	N° cycles	Frequency cycles (cycles/minute)	Force required to extract the extendible elements (N)	Rating
91	91	10.000	10	-	P

**Note:** Test performed on sample as 1<sup>st</sup> test on this sample.  
 Test performed on sample as 1<sup>st</sup> test on this sample.

**TEST REPORT: 4790866004.1**

**Issued on:: 16/1/2024**

**Desk/Table Unit Drop Test ANSI/BIFMA X5.5:2014 Par. 7**



**Length of sample:** 1220 mm

**Weight of sample:** 99,3 kg;

Weight of sample (kg)	Drop height (mm)	N° cycle	Force required to extract the extendible elements (N)	Rating
< 45	180	1 + 1	-	NA
45 - 90	120	1 + 1	-	NA
> 90 – 136	60	1 + 1	-	NA
> 136	-	-	-	NA

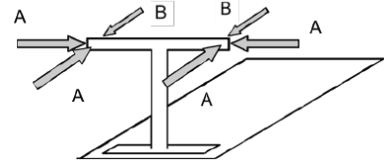
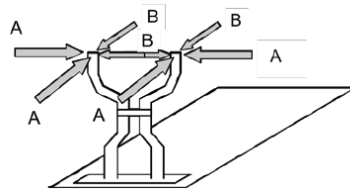
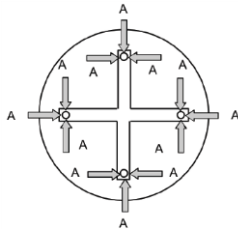
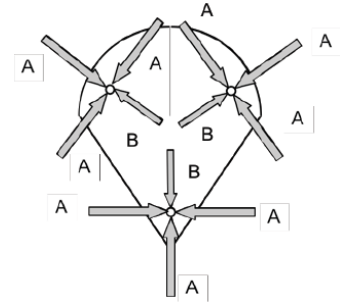
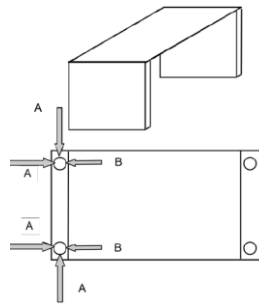
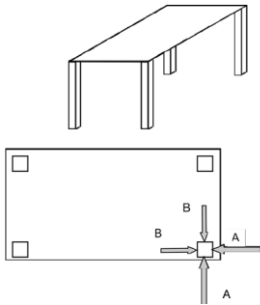
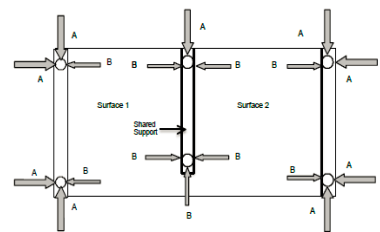
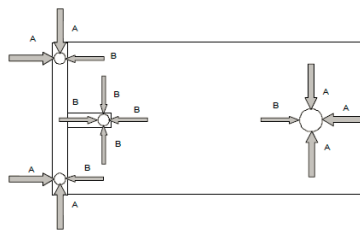
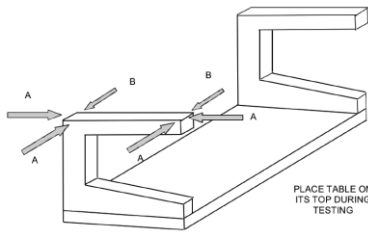
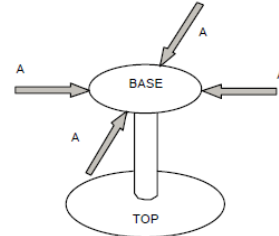
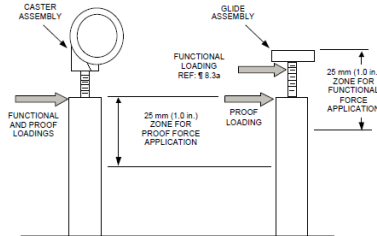
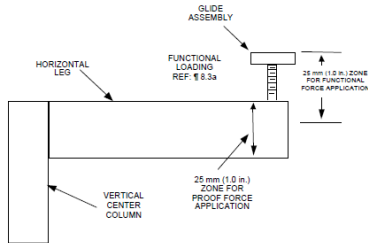
**Note:** test is not applicable if length < 1829 mm



TEST REPORT: 4790866004.1

Issued on:: 16/1/2024

**Leg Strength Test ANSI/BIFMA X5.5:2014 Par. 8**





**TEST REPORT: 4790866004.1**

**Issued on:: 16/1/2024**

Distance of the load point measured from the top of the leg: 25 mm

**Functional Test Procedure ANSI/BIFMA X5.5:2014 Par. 8.3**

Category	Weight (kg)	Force calculation formula (Af)	Force calculated (Af) (N)	Force applied (Af) (max. 445 N) (N)	Force calculation formula (Bf)	Force applied (Bf) (N)	Force required to extract the extendible elements (N)	Rating
I	99,3	0,5 x (Weight) x 9.8 +222	708.57	445	0.5 x A <sub>F</sub>	354.285	-	P
II / III	//	0,5 x (Weight) x 9.8 +44	//	//	0.5 x A <sub>F</sub>	//	//	//

**Note:** Test performed on sample as 7<sup>th</sup> test on this sample.

**Proof Test ANSI/BIFMA X5.5:2014 Par. 8.5**

Category	Weight (kg)	Force calculation formula (Ap)	Force calculated (Ap) (N)	Force applied (Ap) (max. 668 N) (N)	Force calculation formula (Bp)	Force applied (Bp) (N)	Force required to extract the extendible elements (N)	Rating
I	99,3	1.5 x [0.5 x (Weight) x 9.8 +222]	1062.855	668	0.5 x A <sub>P</sub>	532.42	-	P
II / III	//	1.5 x [0.5 (Weight) x 9.8 +44]	//	//	0.5 x A <sub>P</sub>	//	//	//

**Note:** Test performed on sample as 8<sup>th</sup> test on this sample.



**TEST REPORT: 4790866004.1**

**Issued on:: 16/1/2024**

**Key:**

- P** = PASS, the sample MEETS the standard requirement.
- F** = FAIL, the sample DOES NOT MEET the standard requirement.
- NA** = NON APPLICABILE, the requirement/test IS NOT APPLICABLE to the sample.
- NR** = NOT REQUESTED, On Customer request the test is NOT PERFORMED.
- NP** = General note (see details).
- ND** = NOT DECLARED.
- //** = The rating of test CANNOT BE EXPRESSED, see details in test report

**END OF TEST REPORT**