



Test Report: 4790866011.1

APPLICANT

Name: Pineapple Contracts Unlimited
Address: Westmead
Aylesford, ME20 6XJ
United Kingdom



Product: ANSI/BIFMA X5.4 - RYNO
Bench

DATE

Sample in:	28/7/2023	(dd/mm/yyyy)
Tests start:	2/8/2023	(dd/mm/yyyy)
Tests end:	22/9/2023	(dd/mm/yyyy)
Report issue:	23/9/2023	(dd/mm/yyyy)

OVERALL DIMENSIONS:

Measured:	Depth: 400 mm;	Height: 460 mm;
	Width: 1390 mm;	Weight: 25,3 kg;
Nominal	Depth: ND;	Height: ND;
	Width: ND;	Weight: ND;

Sample number 6112699 **Order number:** 14817796

REFERENCE STANDARD

ANSI/BIFMA X5.4:2020 Public and Lounge Seating.

NOTE: clauses considered as not applicable to the product are not listed in this report.

Example of products covered by the standard: common/shared spaces such as waiting, reception, visitor seating in patient rooms*, restaurant/dining/cafe/terrace** settings and other gathering areas.

Sample defects before the test: NO VISIBLE DEFECTS

Tests have been performed at a temperature of 21 ± 6 °C

The tests have been performed on 1 sample as requested by the customer

The sample is classified as multiple seat of class: D

Technician
Rodolfo Sala

Laboratory Manager
Matteo Longoni

*Note: any copy, even partial, of this report, and any change or alteration to it are strictly forbidden.
The test results listed in this report are relevant only for the tested sample. Sampling performed by the customer.*

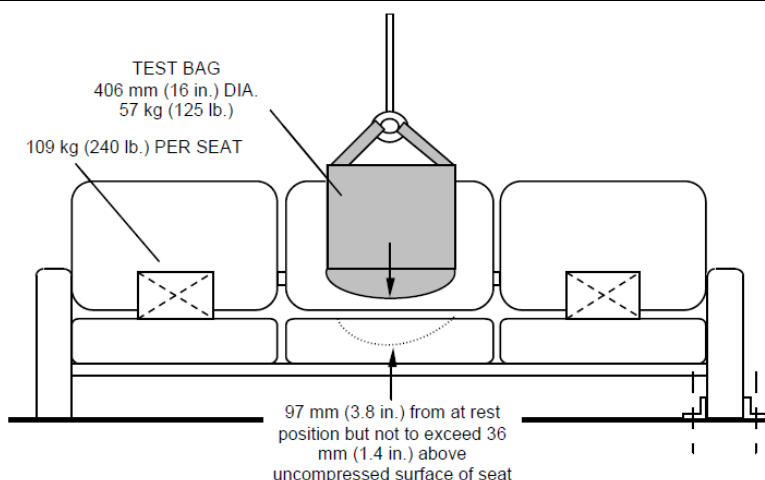
Test Report: 4790866011.1

Issued on: 9/23/2023

Seating properties		
Length of the seat [mm]	Number of seating positions (nearest whole number to length divided by 771)	Single seat length (mm)
1390	2	695

Note: The number of seating has been calculated since this information was not provided by the customer.
Tested backrest is of PIVOT type: NA

ANSI/BIFMA X5.4:2020 Par. 14 Seating Durability Tests - Cyclic



Minimum thickness of cushiony materials of seat: 0 mm

Thickness of additional foam: 50 mm (IFD at 25% di 200 N \pm 22 N)

Distance between the bag and the backrest: NA

Vertical distance between the bottom of the bag in its "at rest" position and the uncompressed surface on the seat: 36 mm (The free fall shall begin after lifting the test bag 97 mm (3.8 in.) above its "at rest" position, but not to exceed 36 mm (1.4 in.) above the uncompressed surface on the seat - as measured at the center of the seat)

Weight of bag (kg)	Height of fall from "at rest" position (mm)	Cycles	Frequency (cycles / minute)	Rating
57	36	100.000	10	P

Note: Test performed on sample as 1st test on this sample.

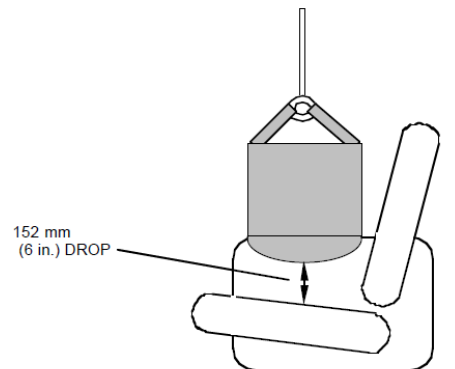
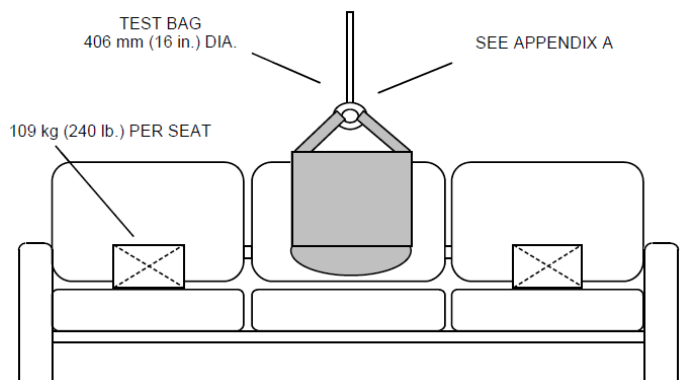
Weight of bag (kg)	Height of fall from "at rest" position (mm)	Cycles	Frequency (cycles / minute)	Rating
57	36	100.000	10	P

Note: Test performed on sample as 2nd test on this sample. The test was repeated since the sample is a multiple seating unit

Test Report: 4790866011.1

Issued on: 9/23/2023

ANSI/BIFMA X5.4:2020 Par. 15 Drop Test - Dynamic



Functional load

Applied load to sitting places not under tested (kg)	Number of sitting places tested	Drop height above uncompressed seat (mm)	Impact mass (kg)	Cycles	Rating
102	2	152	102	1	P

Note: Test performed on sample as 3rd test on this sample. The test has been performed on each sitting position in sequence.

Proof load

Applied load to sitting places not under tested (kg)	Number of sitting places tested	Drop height above uncompressed seat (mm)	Impact mass (kg)	Cycles	Rating
136	2	152	136	1	P

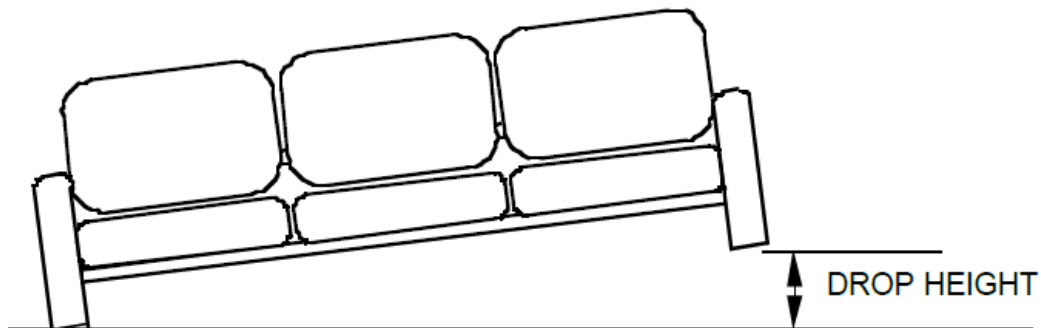
Note: Test performed on sample as 4th test on this sample. The test has been performed on each sitting position in sequence.



Test Report: 4790866011.1

Issued on: 9/23/2023

ANSI/BIFMA X5.4:2020 Par. 17 Unit Drop Test - Dynamic



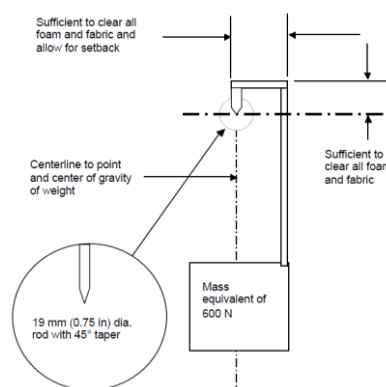
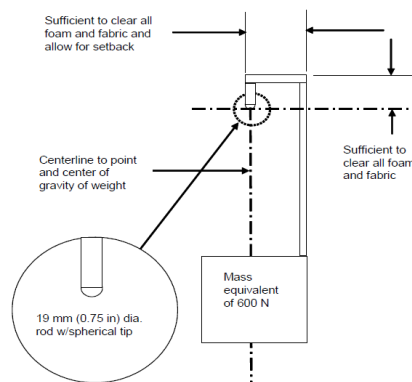
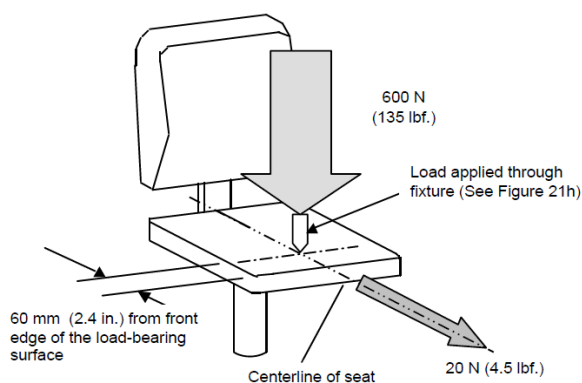
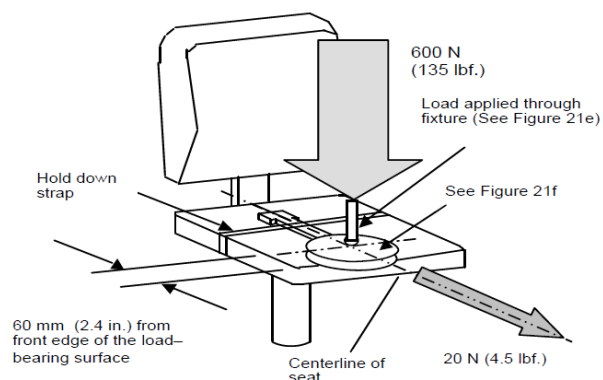
Sample weight (kg)	Drop height (mm)	Cycles	Side	Rating
< 45	180	1	Left	P
		1	Right	P
45 - 90	120	1	Left	NA
		1	Right	NA
> 90 – 136	60	1	Left	NA
		1	Right	NA
> 136	Non applicabile	-	-	NA

Note: Test performed on both sides of the sample. Test performed (on customer request) on sample as 5th test on this sample.

Test Report: 4790866011.1

Issued on: 9/23/2023

ANSI/BIFMA X5.4:2020 Par. 21.5 Front Stability for Units Less than 36.3 kg (80 lbs.)



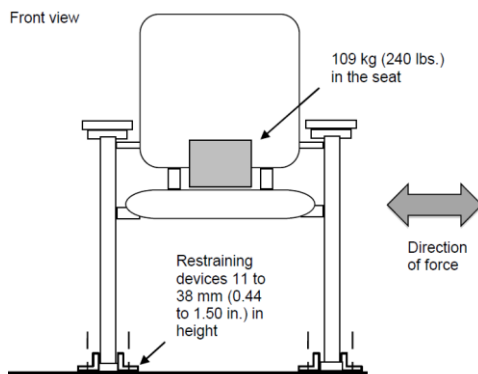
Load seat (kg)	Loading point (mm)	Horizontal force (N)	Rating
60	60 from the front center edge of the loadbearing surface of the chair	20	P

Note: Test performed on sample as 6th test on this sample.

Test Report: 4790866011.1

Issued on: 9/23/2023

ANSI/BIFMA X5.4:2020 Par. 24 Structural Durability Test – Side-to-Side - Cyclic



Load (kg)	Horizontal force (N)	Cycles	Frequency (cycles per minute)	Rating
109	334	25.000	10	P

Note: Test performed on sample as 7th test on this sample.

Key:

- P** = PASS, the sample MEETS the standard requirement.
- F** = FAIL, the sample DOES NOT MEET the standard requirement.
- NA** = NON APPLICABILE, the requirement/test IS NOT APPLICABLE to the sample.
- NR** = NOT REQUESTED, On Customer request the test is NOT PERFORMED.
- NP** = General note (see details).
- ND** = NOT DECLARED.
- //** = The rating of test CANNOT BE EXPRESSED, see details in test report

END OF TEST REPORT