



EXPRESS RANGE

10 DAY
DISPATCH


Pineapple

PLACING YOUR ORDER

Step		Step		Step	
01	Select your furniture	02	Contact us for a quotation and place your order	03	Orders are dispatched within 10 days.
		Visit us.pineapplecontracts.com Email inquiries@pineapplecontracts.com Call 800.496.9324			

EXPRESS RANGE

Dispatched within 10 days

		Placing your order
<p>Our furniture is typically made-to-order, with upholstered items made in a fabric of your choice - a process which takes time and care to ensure the products are strong and durable enough for challenging environments.</p>		
<p>We understand that in some circumstances, shorter lead times are required, which is why we hold our most popular ranges in stock, ready for dispatch within 10 days</p>		
<p>Our products are guaranteed against manufacturing faults for 7 years (exclusions apply), with Ryno® products protected by a lifetime guarantee.</p>		
<p>Our products are durability tested for severe non-domestic use, and flame retardant to contract level with upholstery and fabrics meeting CAL TB 116 & 117, NFPA 260 USA.</p>		<p>Once you have selected your products, please contact us to request a quote and place your order.</p>
		Visit us.pineapplecontracts.com Email inquiries@pineapplecontracts.com Call 800.496.9324



RYNO® LOUNGE

10 DAY
DISPATCH

Ryno lounge chair

1RYL-00

30.7"H | 23.6"W | 29.9"D

Seat height: 16.5"

Weight: 31 lbs.



Moonwalk
1RYL-00-MG



Cool Green
1RYL-00-CG

Ryno coffee table

1RYF-00

16.7"H | 25.7" | 25.7"D

Weight: 26 lbs.



Moonwalk
1RYF-00-MG

KEY FEATURES

- Ergonomically designed to give excellent comfort
- Hygienic, wipe-clean surface dries easily ready for re-use
- Strength and stability tested for severe contract use
- Pick proof design
- Water-resistant, UV-stabilized material makes non-upholstered items suitable for outdoor use



RYNO® SEATING

10 DAY DISPATCH

Ryno® tub chair

1RYU-00

31.7"H | 26.3"W | 26.7"D

Seat height: 16.9"

Weight: 40 lbs.



Moonwalk
1RYU-00-MG



Cool Green
1RYU-00-CG

Ryno® stool

1RYS-00

18.5"H | 17.5"W | 15.5"D

Seat height: 18.5"

Weight: 11 lbs.



Moonwalk
1RYS-00-MG



Cool Green
1RYS-00-CG

KEY FEATURES

- Hygienic, wipe-clean surface dries easily ready for re-use
- Strength and stability tested for severe contract use. Exceeded the 200,000 cycle pass mark by a further 300,000 cycles
- Pick proof design
- Water-resistant, UV-stabilized material makes non-upholstered items suitable for outdoor use



RYNO® ROCKER

10 DAY
DISPATCH



Ryno® Rocker Dusty Blue

1RYR-00-DB

34.1"H | 30"W | 39"D

Seat height: 16.9"

Weight: 46.3 lbs.

KEY FEATURES

- Gentle rocking motion provides comfort and calm
- Sloped arms and low back designed to minimize ligature risks
- Made with recycled content
- Pick proof design
- Hygienic, wipe-clean surface dries easily ready for re-use
- Water-resistant, UV-stabilized material makes items suitable for outdoor use



RYNO® DINING

10 DAY DISPATCH

Ryno® dining chair

1RYD-00
34.6"H | 19.6"W | 24.4"D
Seat height: 26"
Weight: 26.5 lbs



Moonwalk
1RYD-00-MG



Cool Green
1RYD-00-CG



Icon Purple
1RYD-00-IP



Epic Blue
1RYD-00-EB

Ryno® club chair

1RYC-00
35"H | 24"W | 24"D
Seat height: 17.5"
Weight: 40lbs.



Moonwalk
1RYC-00-MG



Cool Green
1RYC-00-CG

KEY FEATURES

- Ergonomically designed to give excellent comfort and support
- Carefully considered curved design minimizes ligature risks

- Hygienic, wipe-clean surface dries easily ready for re-use



RYNO® TABLES

10 DAY DISPATCH



Ryno® dining table with molded top
1RYDT-00-DT-B
29.5"H | 49.2"ø
Seats: 4
Weight: 73 lbs.



Ryno® games top table
1RYDT-00-GT-B
29.5"H | 49.2"ø
Seats: 4
Weight: 163 lbs.

KEY FEATURES

- Cruciform base design prevents conflict and passing of contraband
- Hygienic, wipe-clean surface dries easily ready for re-use excellent chemical resistance
- Pick proof design
- Molded top table is water-resistant and UV stabilized, making it suitable for outdoor use
- Games top features laser printed games including, chess, solitaire, and backgammon
- Weighted models available (218/309 lbs.)



RYNO® BEDROOM

10 DAY DISPATCH



Ryno® Open nightstand
1RYOB-MG
23.4"H | 15.7"W | 15"D
Weight: 29 lbs.



Ryno® Open wall shelf
1RYOWS-MG
47.2"H | 27.5"W | 12.3"D
Weight: 44 lbs.



Ryno® Open wardrobe fully shelved
1RYOW-00-MG
78.7"H | 27.4"W | 20"D
Weight: 99 lbs.



Ryno® Open chest
1RYOC-MG
29"H | 27.5"W | 20"D
Weight: 53 lbs.



Ryno® Open desk
1RYOD-MG
29"H | 27.5"W | 20"D
Weight: 44 lbs.

KEY FEATURES

- One-piece design makes products water-resistant and prevents concealment of contraband
- Carefully considered curved design minimizes ligature risks
- Hygienic, wipe-clean surface dries easily ready for re-use
- Sloping top and stepped-back shelves to prevent climbing
- Organic textures help to create an environment that fosters recovery
- Pick proof design



RYNO® BEDROOM

10 DAY DISPATCH



Ryno® 3' bed with storage
1RYBS-MG
18.9"H | 82.7"W | 39.8"D
Weight: 227 lbs.



Ryno® 3' bed
1RYB-MG
18.9"H | 82.7"W | 39.8"D
Weight: 243 lbs.

International Registered Design
No. DM/204506

KEY FEATURES

- One-piece design makes products water-resistant and prevents concealment of contraband
- Safely rounded corners
- Hygienic, wipe-clean surface dries easily ready for re-use

- Tapered design maximizes floor space and aids staff access
- Bed bug resistant material
- Pick proof design



SIGMA PLUS

10 DAY
DISPATCH



Sigma Plus chair in Teal
1SIGP1-900
31.5"H | 31.5"W | 27.9"D
Seat Height: 17.3"
Weight: 79.4 lbs



Sigma Plus 2-seater in Teal
1SIGP2-900
31.5"H | 53.1"W | 27.9"D
Seat Height: 17.3"
Weight: 112.4 lbs.

KEY FEATURES

- Plywood reinforcement, including a fully enclosed base to prevent concealment
- Wrap-around design of the seat back gives great comfort and support for users
- Fixed seat base to deter misuse
- Compact footprint helps you make the most of your available space
- Double top-stitched seams for strength and appearance



SNUG PLUS

10 DAY
DISPATCH



Snug Plus chair in Gunmetal
1SGP1-400
34.6"H | 35.4"W | 38.6"D
Seat height: 15.7"
Weight: 88 lbs



Snug Plus corner chair in Gunmetal
1SGPC1-400
34.6"H | 38.6"W | 38.6"D
Seat height: 15.7"
Weight: 116.5 lbs.

KEY FEATURES

- Plywood reinforcement, including a fully enclosed base to prevent concealment
- Versatile modular design helps you make the most of your space
- Promotes social inclusion
- Low overall height provides clearer sight lines for staff
- No-arm design aides de-escalation
- Fixed seat and back cushions



BODEN BEANBAG

10 DAY
DISPATCH



Boden bean bag chair in Teal
1BOCHAIR1-100
35.4"H | 39.3"W | 41.3"D
Weight: 15.5 lbs.



Boden bean bag chair in Gunmetal
1BOCHAIR1-100
35.4"H | 39.3"W | 41.3"D
Weight: 15.5 lbs.

KEY FEATURES

- Double-stitched seams and non-accessible zips prevent tampering
- Flame-retardant filling gives the bean bags their shape and comfort

- Internal seam lining provides an extra layer of protection



SEAL ANTI-CONCEALMENT

10 DAY DISPATCH

Seal anti-concealment chair
 1SAS1-70
 33.1"H | 29.5"W | 27.6"D
 Unweighted 57.3 lbs.

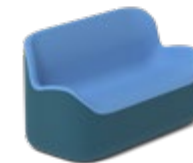


Azur Blue
 1SAS1-70-BLUE



London Grey
 1SAS1-70-GREY

Seal anti-concealment loveseat
 1SAS2-90
 33.1"H | 59.1"W | 27.6"D
 Seat height: 14.9"
 Unweighted 99.2 lbs.



Azur Blue
 1SAS2-90-BLUE



London Grey
 1SAS2-90-GREY

KEY FEATURES

- Designed without seams or gaps to minimize concealment opportunities
- Water-resistant, hygienic outer skin which can be easily cleaned and dried for re-use
- Subtle arms support staff in safe de-escalation practices
- Anti-concealment base with non-accessible fixings



CUMULUS PLUS DINING TABLES

10 DAY
DISPATCH



Cumulus Plus 900 x 900 table
1CSPT-9090-WT
29.1"H | 35.4"W | 35.4"D
Seats: 4
Weight: 156 lbs.



Cumulus Plus 1200 x 1200 table
1CSPT-1212-WT
29.1"H | 47.2"W | 47.2"D
Seats: 4
Weight: 202.5 lbs.



Cumulus Plus 1500 x 900 table
1CSPT-1590-WT
29.1"H | 59"W | 35.4"D
Seats: 6
Weight: 270.5 lbs.

KEY FEATURES

- Heat and impact resistant laminate top
- Solid steel base plate provides strength and stability
- 12" diameter steel pedestal for added strength
- Heavily weighted to deter misuse
- Suitable for wheelchair users

See for yourself...

To arrange a demonstration or book a visit to our showroom, please call 800.496.9324

Pineapple USA, 7105 19 Mile Rd, Sterling Heights, MI 48314

Pineapple Canada, 210 James A. Brennan Road, Gananoque, ON K7G 1N7

T 800.496.9324

E inquiries@pineapplecontracts.com

W us.pineapplecontracts.com

Pineapple