

# CASE STUDIES

→ Explore our latest projects from around the world



Designed for  
peace of mind

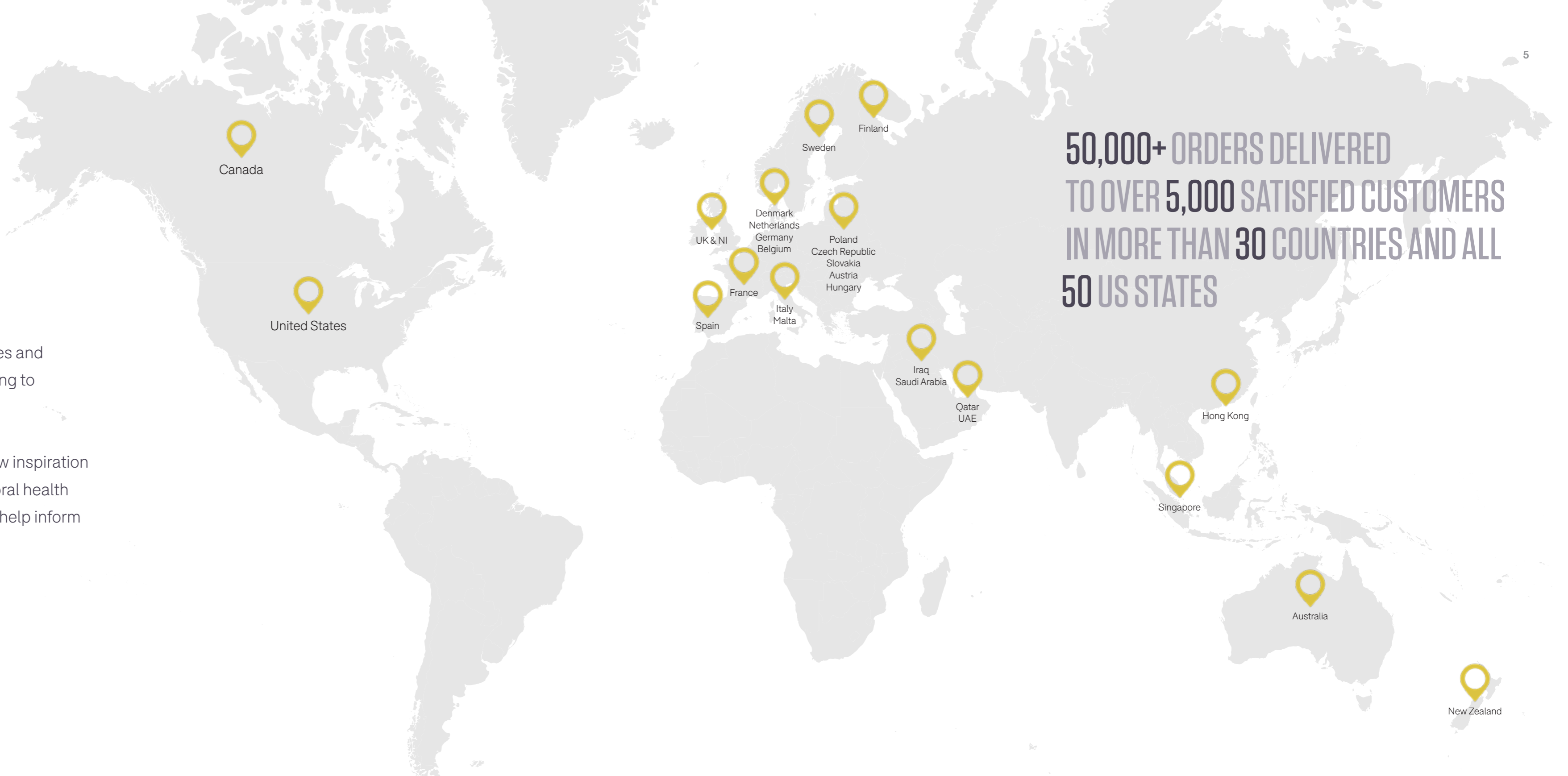
Pineapple



# GLOBAL PROJECTS

Through our network of sales offices and distributors, our products are helping to improve safety across the world.

In the following pages you can draw inspiration from the latest mental and behavioral health and youth justice environments to help inform your projects.



**50,000+** ORDERS DELIVERED  
TO OVER **5,000** SATISFIED CUSTOMERS  
IN MORE THAN **30** COUNTRIES AND ALL  
**50** US STATES



# MENDOTA JUVENILE TREATMENT CENTER

## Secure Mental and Behavioral Health Facility

**Category** Juvenile Justice | Mental and Behavioral Health

**Location** Madison, WI | USA

**Year of completion** 2024

**Client** Wisconsin Dept of Health Services | Mendota Juvenile Treatment Center

### Furniture provided by Pineapple

- Ryno® dining chairs
- Ryno® beds
- Boden beanbag chairs
- Contessa foam drums
- Cumulus plus dining tables
- Sigma plus tub chairs
- Nero chairs
- Ryno® wall shelf
- Ryno® desk
- Ryno® stool
- Snug plus modular seating
- Cadrega dining chairs







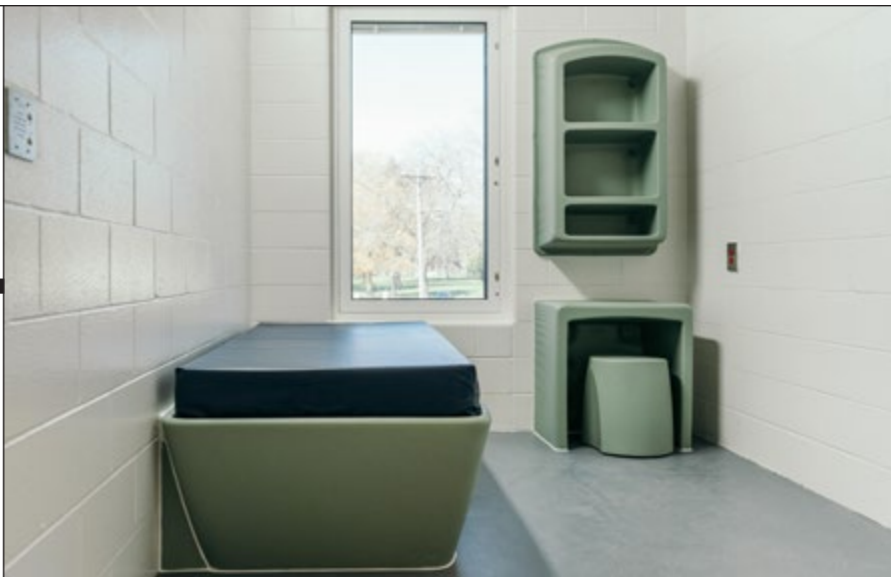
The furniture selection process for this new facility placed particular importance on durability, safety and aiding in safe observation practices for staff.

## CASE STUDY

### Mendota Juvenile Treatment Center

The Mendota Juvenile Treatment Center utilizes a unique approach to care for juveniles in need of mental and behavioral care. Featuring a teared approach, the facility needed robust and diverse furniture options that would withstand and move through the levels as needed.

The most severe levels feature our lifetime warranty Ryno chairs and tables. The bedrooms are fully Ryno as well providing durability and over 13 color options. Mendota decided on multiple colors throughout the facility to create uniqueness across the levels.



Less severe levels showcase living spaces that feature comfort seating such as our Snug Plus modular seating, Magna chairs, Sigma tub chairs, and Cadrega dining chairs. These furnishings offer dependability and relaxation for residents. Multiple upholsteries were chosen to blend the environments and create a sense of calm.

This new facility focuses on a new approach to healing. Pineapple is proud to have sourced the facilities furnishings and created an environment that is truly built to last.

Photography by Paulius Musteikis



# WILLMAR BEHAVIORAL HEALTH

## Child & Adolescent Behavioral Health Hospital

**Category** Mental and Behavioral Health

**Location** Willmar, MN | USA

**Year of completion** 2023

**Client** CentraCare | Minnesota Dept of Human Services

**Architect** Mohagen Hansen

### Furniture provided by Pineapple

→ Ryno® dining chairs

→ Ryno® lounge chairs

→ Boden beanbag chairs

→ Contessa foam drums

→ Cumulus dining tables







Pictured - Ryno@lounge chairs | Contessa foam drums



Pictured - Boden beanbags | Contessa foam drums



Pictured - Ryno@ dining chairs | Cerminus dining table



Pictured - Ryno@lounge chairs | Contessa foam drums

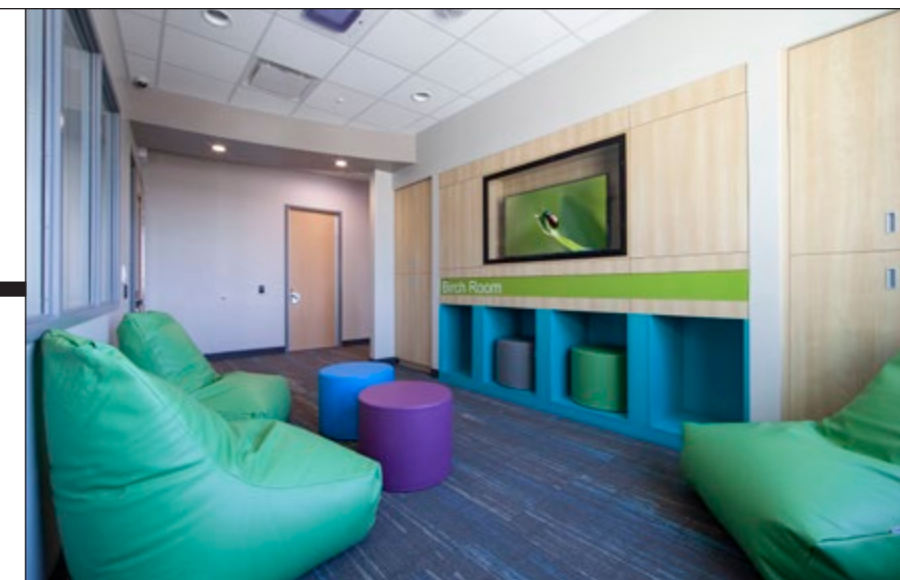
The furniture selection process for this new facility placed particular importance on durability, safety and aiding in safe observation practices for staff.

## CASE STUDY

### Willmar Behavioral Health

Reduced-ligature design features were a high-priority requirement for this new Child and Adolescent Behavioral Health Hospital (CABHH) located in Willmar, MN. The facility was designed to provide inpatient services for children and young people aged between 6 and 18 years of age, which called for an inclusive interior design approach that would be suitable for a wide range of ages.

Boden beanbag chairs provide relaxed seating in recreation areas, offering a comfortable spot for reading, gaming or watching TV. Products in our Boden range have anti-tamper features such as zip-heads



removed and oversewn -making them inaccessible- to prevent misuse.

The furniture selection process for this new facility placed particular importance on durability, safety and aiding in safe observation practices for staff. Thanks to thoughtful design and vibrant colour choices, the resulting space combines dependable safety with an atmosphere of hope and vitality.

Photography by Randy Hoepner



# RADIUS CAMPUS

## Youth Justice Center

**Category** Juvenile Justice | Mental and Behavioral Health

**Location** Omaha, NA | USA

**Year of completion** 2023

**Client** RADIUS

**Architect** HDR

### Furniture provided by Pineapple

→ Rock dining chairs

→ Rock dining tables

→ Boden beanbags

→ Snug modular seating

→ Harby open desks

→ Harby beds







Pictured - Rock dining chair | Acumen open desk | Acumen bed



Pictured - Rock dining table



Pictured - Shug modular seating | Boden beanbags

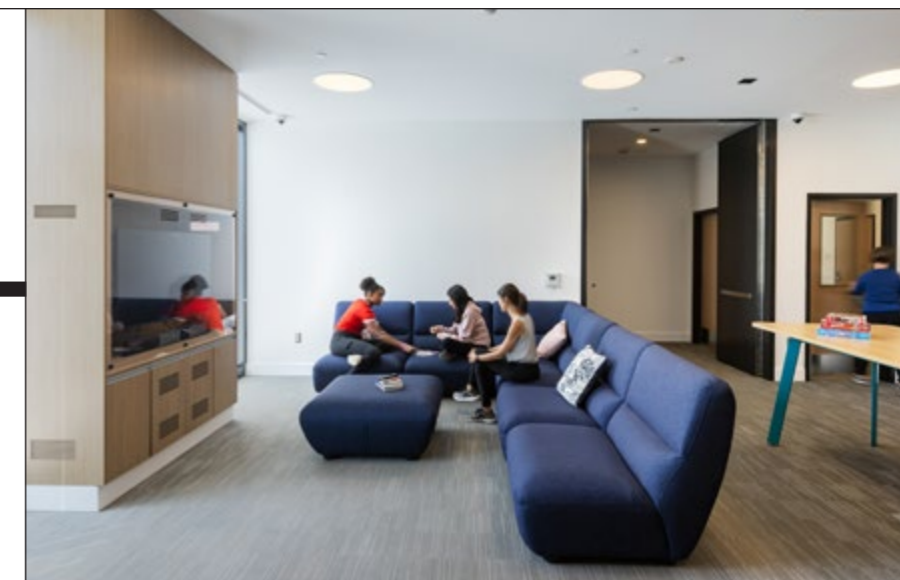
Through Pineapple's modern designs, Radius was able to provide a home-like environment for their residents.

## CASE STUDY

### Youth Justice Center

Radius opened with the intention of providing holistic rehabilitation and schooling to teenagers involved with the criminal justice system but not in detention. Located in Omaha, NA, the juvenile justice center is a non-profit focused on restoring relationships between youth, families, and their community. Through Pineapple's modern designs, Radius was able to provide a home-like environment for their residents.

Located throughout the facility, the Rock Dining Table and Rock Chair are elegantly designed while offering strength and support.



The chairs and tables feature solid birch frames with durable soft edges. The Rock chair is designed with cross-braced skies for added strength and maneuverability. This set can be used for both dining and activity and is built to last. The products chosen for the Youth Justice Centre were chosen with safety, durability, and strength in mind. Through Pineapple's innovative designs, the products chosen for the facility will aid in creating a holistic environment for teens.

Photography by Dan Schwalm © 2023 HDR



# UNIVERSITY OF KENTUCKY

## Adolescent Behavioral Health Unit

**Category** Mental and Behavioral Health

**Location** Lexington, KY | USA

**Year of completion** 2023

**Client** UK HealthCare | University of KY Children's Hospital

**Architect** Stengel Hill Architecture

### Furniture provided by Pineapple

- Ryno® bedroom range
- Ryno® dining chairs
- Ryno® activity tables
- Ryno® stools
- Contessa foam shapes
- Zen Plus lounge
- Cumulus Plus dining tables







Pictured - Ryno dining chairs | Ryno activity tables



Pictured - Ryno dining chairs | Cumulus dining tables | Comessa foam shapes



Pictured - Zen Plus lounge chairs



Pictured - Ryno Bedroom | Ryno stool



“Each patient has a dedicated space where they can feel safe, and their belongings are integrated into that space.”

## CASE STUDY Adolescent BH unit

The University of Kentucky recently relocated their Adolescent Behavioral Health program and Pineapple was chosen to provide furnishings for the project. In partnership with the University of Kentucky Children’s Hospital, the renovation aids in the alignment of services for children throughout their facilities.

In collaboration with Stengel Hill Architecture, the renovation was designed to provide children and adolescents with a sense of personal space and privacy while giving them the best care.

Beyond the bedrooms we also provided furniture solutions for the community spaces.

The chairs serve as dining and casual, downtime seating and accompany the Ryno Activity Tables provide long-lasting options for the daily demands within the unit.

The Adolescent Behavioral Health unit will help reduce stressors and create a rehabilitative environment for all. The renovation and design will “provide both Staff and Patients a space that creates safety, healing and hope”

Photography by Dan Schwalm © 2023 HDR



# RUSK STATE HOSPITAL

## Mental Health Hospital

**Category** Mental Health

**Location** Rusk, TX | USA

**Year of completion** 2023

**Client** Rusk State Hospital

**Architect** HKS | Architecture+

### Furniture provided by Pineapple

→ Ryno® dining chairs

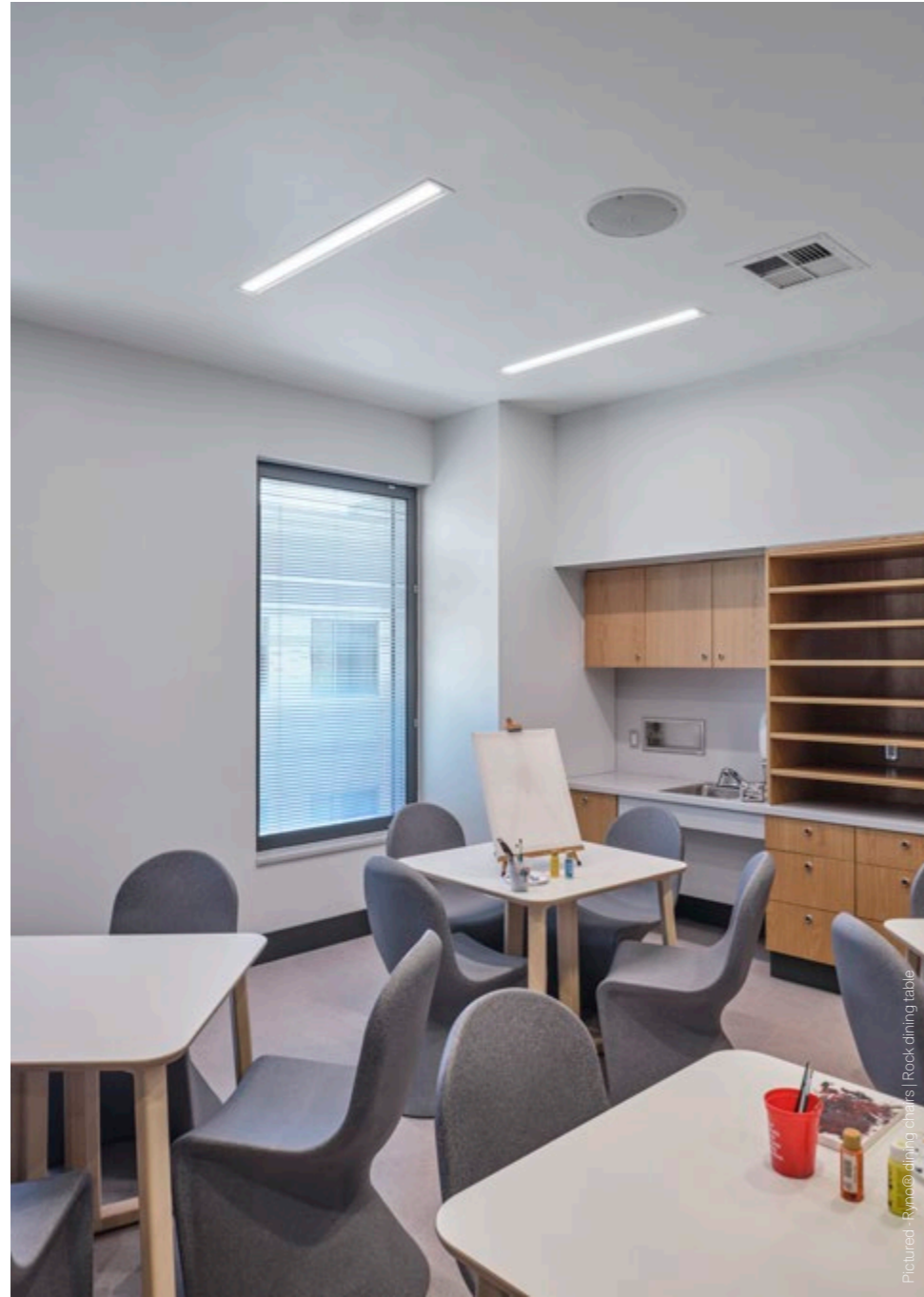
→ Ryno® club chairs

→ Rock dining tables

→ Cumulus dining tables







Rusk State Hospital in Texas is a newly renovated mental health complex that features a state-of-the-art facility furnished with Pineapple products.

## CASE STUDY

### Mental Health Hospital

Rusk State Hospital in Texas is a newly renovated mental health complex that features a state-of-the-art facility furnished with Pineapple products. The facility recently opened in 2023 and has helped further mental health services across Texas. Pineapple sets a standard of reliability, modernity, and knowledgeability of the behavioral healthcare space and by choosing us for their furniture needs, they received a result that suits their desire for a durable, yet modern environment.

The 200-bed hospital features innovative design choices and various outdoor and common areas to create a peaceful environment intended to promote



healing. Within these rooms are a variety of Pineapple products.

Rusk State Hospital took on a large renovation to revamp and modernize its facility. With mental health at the center of their cause, Pineapple was able to provide furnishings that were not only built to last but furniture that strays from the typical behavioral health image and utilizes modern and functional designs creating a lively and rehabilitative environment.

Photography by HKS, Inc.



# TAMPA VETERANS AFFAIRS

## Behavioral Health Care Clinic

**Category** Mental and Behavioral Health

**Location** Tampa, Florida | USA

**Year of completion** 2023

**Client** Veterans Affairs | GSA

### Furniture provided by Pineapple

- Harby beds
- Acumen wardrobes
- Acumen open desks
- Acumen nightstands
- Bold chairs







The objective for this facility was to provide a safe space, aided by furnishings that are dependable options.

## CASE STUDY Tampa VA

Veterans Affairs across the country work to provide all types of care for veterans. Recently, in Tampa Florida, the VA opened a behavioral health clinic which proudly features a variety of Pineapple furniture.

Featuring over 60+ bedrooms, Harby beds were selected as a main staple in the rooms. These safe beds are strength tested to over 700lbs and feature solid reinforced under rails and an enclosed base.

Acumen wardrobes, Acumen open desks and Bold chairs help complete the bedroom set. Acumen wardrobes come in a selection of configurations,



offering hanging and drawered options to maximize storage space. The range features scalloped handles and piano hinges to reduce ligature risks and offers an optional slopped top that helps prevent climbing.

Pineapple strives to provide our clients with safe, durable, and dependable furniture that is built to last.

Photography by TheGalleryStudios.com



# BAPTIST HEALTH HOSPITAL

## Mental Health Hospital

**Category** Mental and Behavioral Health

**Location** Pensacola, Florida | USA

**Year of completion** 2023

**Client** Baptist Health Care

### Furniture provided by Pineapple

→ Ryno® dining chairs

→ Ryno® dining tables

→ Ryno® stools

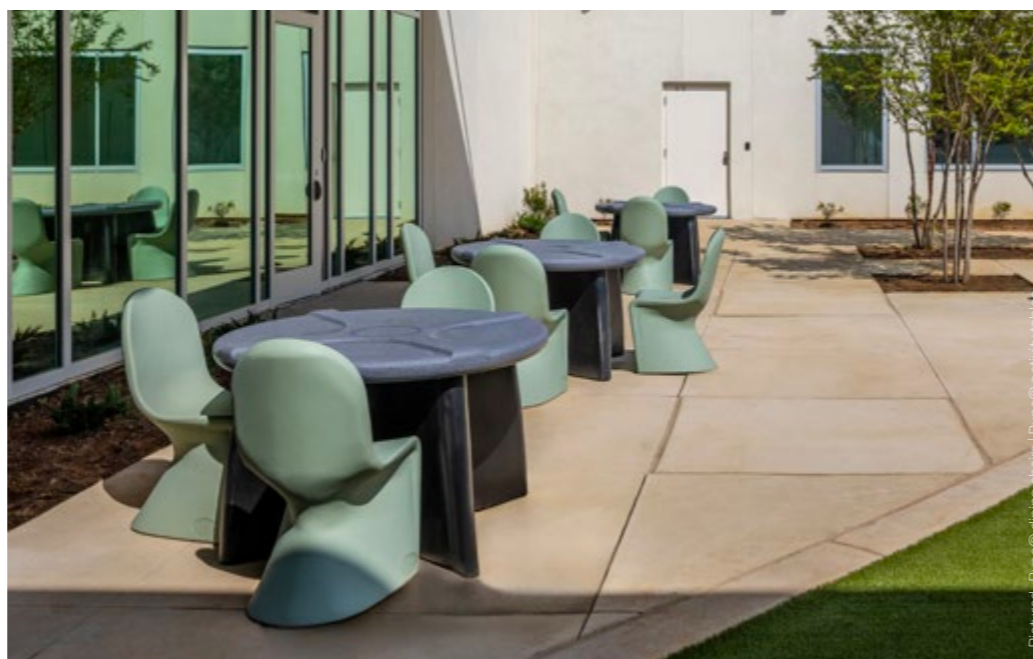
→ Ryno® open modular storage

→ Ryno® open bedside

→ Zen Plus rocker







Pineapple was able to create a small sense of healing for those who visit the Baptist Health Hospital.

## CASE STUDY

### Baptist Health Pensacola

The Baptist Health Hospital is a new development in Florida that has recently opened its doors. Featuring a collaborative effort from various companies, Pineapple provided furnishings for the behavioral health unit. These furnishings ranged from our robust Ryno products to the self-soothing Zen range.

The main space that we provided products for was the outdoor patio. This space is now home to our Ryno dining tables as well as Ryno dining chairs and Ryno stools. All these products provide water resistance and UV-stabilized material, making them an ideal choice for outdoor use. The Ryno range features over 13 versatile



color options and come with a lifetime warranty guarantee as standard.

We also furnished the patient bedrooms with Ryno Bedroom products, including the open modular storage and open nightstand. This range offers great storage options while maintaining patient safety with rounded corners and reduced ligature points. The open storage options allow for easier supervision and anti-stashing capabilities and can be fixed to either the floor or the wall to further ensure the safety of patients and staff.

Photography by Chad Baumer



# KIMMERIDGE COURT

## Eating Disorder Care Unit

**Category** Mental and Behavioral Health

**Location** Poole, Dorset | England

**Year of completion** 2023

**Client** Dorset HealthCare University NHS Foundation Trust

**Architect** Medical Architecture

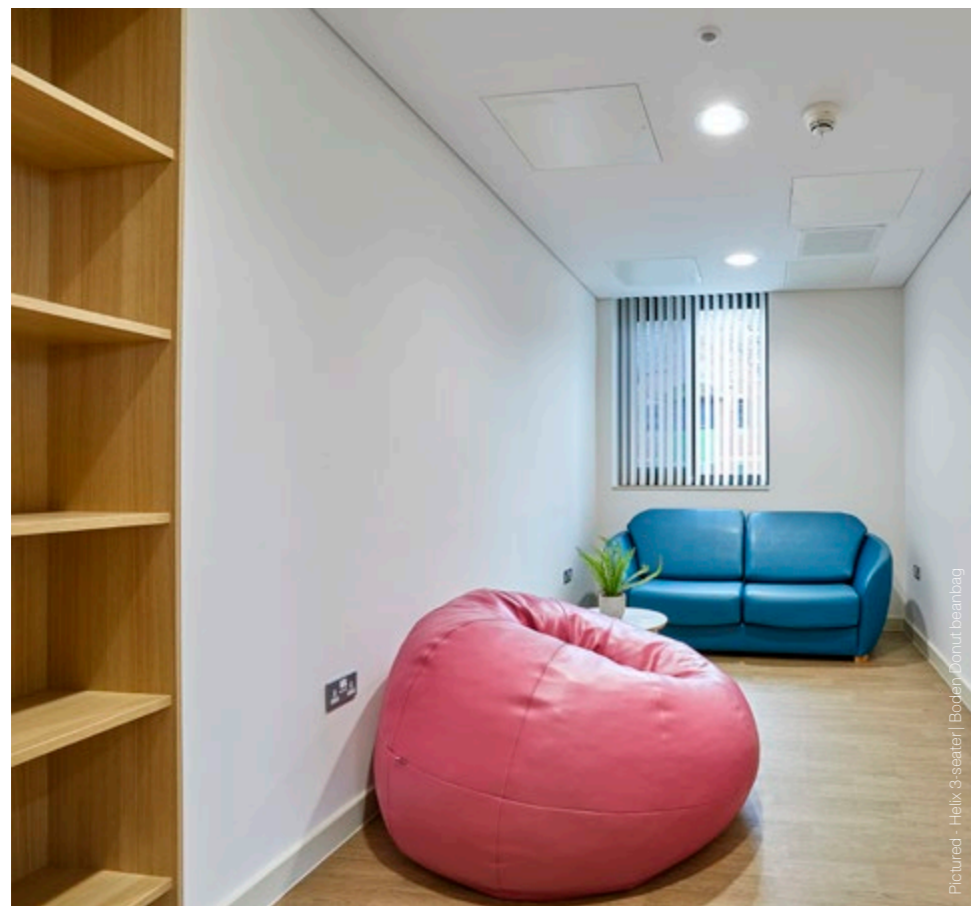
**Contractor** Kier

### Furniture provided by Pineapple

- Helix armchairs
- Helix 3-seaters
- JAK de-escalation couch
- Rock dining chairs
- Rock dining tables
- Rock coffee tables
- Snug modular seating
- Boden Donut beanbag
- Purl chairs







Pictured - Helix 3-seater | Boden Donut beanbag



Pictured - Fun armchairs | Mesa arm chair



Pictured - Beck range



Pictured - J.K de-escalation couch

Our products are designed to meet these needs while combining them with a welcoming aesthetic which avoids the stigmatizing effects which some healthcare environments can have.

## CASE STUDY

### Kimmeridge Court

Kimmeridge Court is a newly constructed eating disorder clinic located at St. Ann's Hospital in Poole, Dorset. The facility, operated by Dorset Healthcare University NHS Foundation Trust, was built to address the national shortage of patient beds for eating disorder treatment, and is the only dedicated unit for such treatment in the Dorset region. The service is designed to treat patients with eating disorders as well as accommodating their families and caregivers.

In a project like this, furniture must be robust, secure, dependable, and easy to clean. Our products are designed to meet these needs while combining them



with a welcoming aesthetic which avoids the stigmatizing effects which some healthcare environments can have.

Kimmeridge Court has received overwhelmingly positive feedback from the community since its unveiling. With its bright, airy, and well-lit environment, Kimmeridge Court was a project we were delighted to have been a part of. We take great pride in supplying furniture that is tailored to meet our clients' unique requirements, and we remain committed to providing an exceptional level of service to all our clients.



# LINCOLN COUNTY HOSPITAL

## Peter Hodgkinson Center

**Category** Mental and Behavioral Health

**Location** Lincoln | England

**Year of completion** 2023

**Client** Lincolnshire Partnership NHS Foundation Trust

**Architect** Gilling Dod

**Contractor** Vinci Construction

### Furniture provided by Pineapple

→ Ryno® club chairs

→ Ryno® pedestal tables

→ Ryno® benches







Our robust and durable Ryno® range excels outdoors thanks to its water-resistant and UV-stabilized materials.

## CASE STUDY

### Peter Hodgkinson Center

Two state-of-the-art mental health wards have recently opened at the Peter Hodgkinson Center situated at Lincoln County Hospital, enabling Lincolnshire Partnership NHS Foundation Trust (LPFT) to broaden its scope and offer invaluable care and support to adults who need mental health crisis support.

Ryno® club chairs and Ryno® pedestal tables were chosen to provide safe seating for the outside courtyard areas. The pedestal tables were securely fixed to the floor using our patented hidden fixings methods, while the Ryno® club chairs were heavily weighted (to 136lbs) to allow them to be repositioned without compromising



safety. The club chair, distinguished by its sloped arm and curved back design was chosen for its reduced-ligature design, helping to create a safer environment for patients.

Our robust and durable Ryno® range excels outdoors thanks to its water-resistant and UV-stabilized materials which provide dependable long-term durability. Combining an inspiring aesthetic with an emphasis on safety and comfort, Ryno products can contribute to environment that promotes healing and well-being for adults facing mental health challenges.

Photography by Chris Vaughan



# UDSTON HOSPITAL

## Child & Adolescent Mental Health Service

**Category** Mental and Behavioral Health

**Location** Hamilton, Lanarkshire | Scotland

**Year of completion** 2023

**Client** North Lanarkshire's Health & Social Care Partnership

**Contractor** Emtec Property Services

### Furniture provided by Pineapple

→ Ohio Plus modular seating

→ Snug Plus modular seating

→ Boden beanbags

→ Contessa foam shapes

→ Acumen TV cabinet







The space is a testament to all those who worked on this project, creating a safe and welcoming environment that is appealing to patients, visitors and staff alike

## CASE STUDY

### Udston Hospital

NHS Lanarkshire recently opened their new CAMHS center at Udston Hospital, providing outpatient services to children and young people with emotional, behavioral, or mental health difficulties within the Lanarkshire area.

Reflecting a modern approach to mental health care, the new center was designed with input from young people and their families and in a departure from the traditional waiting area design comprising rows of chairs, this design focuses on informal arrangements throughout the space facilitated by the modular nature of the furniture. A TV screen is safely contained within a wall-mounted



Acumen TV cabinet. This reduced ligature range of secure TV cabinets feature a 8mm clear polycarbonate safety screen, providing protection from accidental or purposeful damage, making them an ideal choice for challenging environments.

The space is a testament to all those who worked on this project, creating a safe and welcoming environment that is appealing to patients, visitors and staff alike.

Photography by Neale Smith



# LANSDOWNNE

## Secure Children's Center

**Category** Mental and Behavioral Health

**Location** Hailsham, East Sussex | England

**Year of completion** 2020

**Client** Lansdownne | East Sussex County Council

**Architects** IBI Group

**Contractor** Beard Construction

### Furniture provided by Pineapple

→ Ryno® bedroom range

→ Ryno® dining chairs

→ Contessa foam shapes

→ Boden beanbags

→ Cascade Plus

→ Cumulus Plus dining tables

→ Snug Plus modular seating

→ Magna Plus sofa







Pictured - Ryno® dining chairs | Cumulus dining table | Boden beanbags



Pictured - Ryno® bedroom | Cotagessa



Pictured - Ryno® dining chairs | Cumulus Plus dining table

Lansdowne is a local authority run home, which focuses on the educational, emotional and physical wellbeing of children.

## CASE STUDY Lansdowne Children's Center

Lansdowne Children's Home is a purpose-built, safe and secure environment based in East Sussex, that provides care to young people aged from 10 to 17. Lansdowne is a local authority run home, which focuses on the educational, emotional and physical wellbeing of children.

The recent re-development has seen Lansdowne extend its capacity from seven bedrooms to now accommodate an additional five bedrooms. When an initial supplier was unable to deliver its products, Pineapple was in the position to step in and ensure the project had a successful outcome.



By working as a team from understanding the needs of the client to the delivery and installation, we were proud to have worked alongside representatives of both Lansdowne and IBI Group (the internationally renowned architectural firm) that resulted in safe and modern child-focused space.



# ST. ANN'S HOSPITAL

## Blossom Court, Mental Health Unit

**Category** Mental and Behavioral Health

**Location** Tottenham, London | England

**Year of completion** 2020

**Client** Barnet, Enfield & Haringey Mental Health NHS Trust

**Architect** Medical Architecture

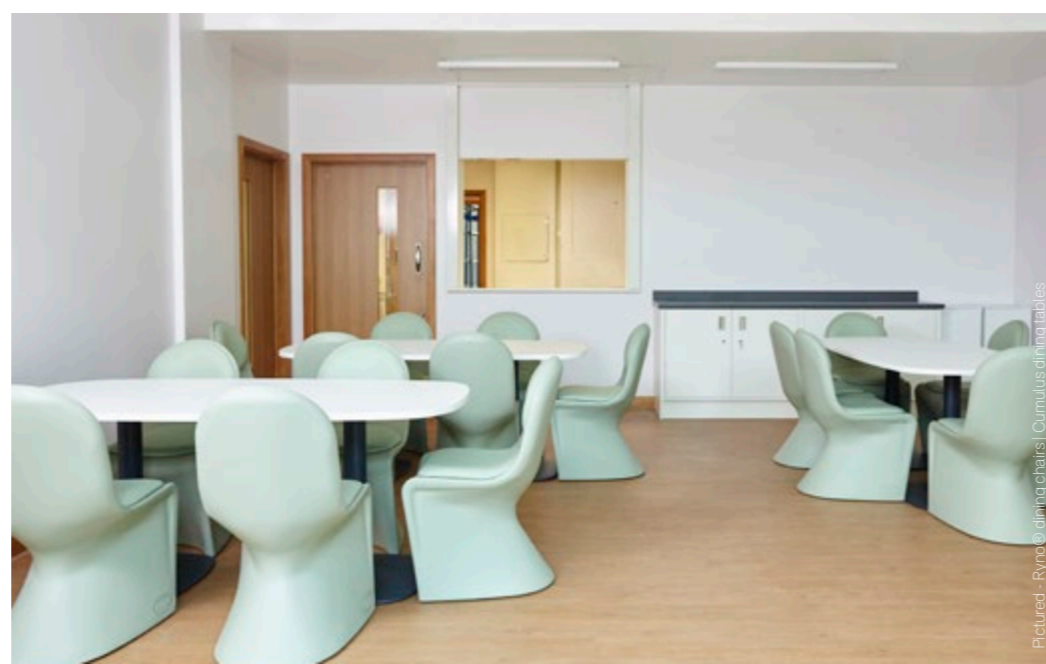
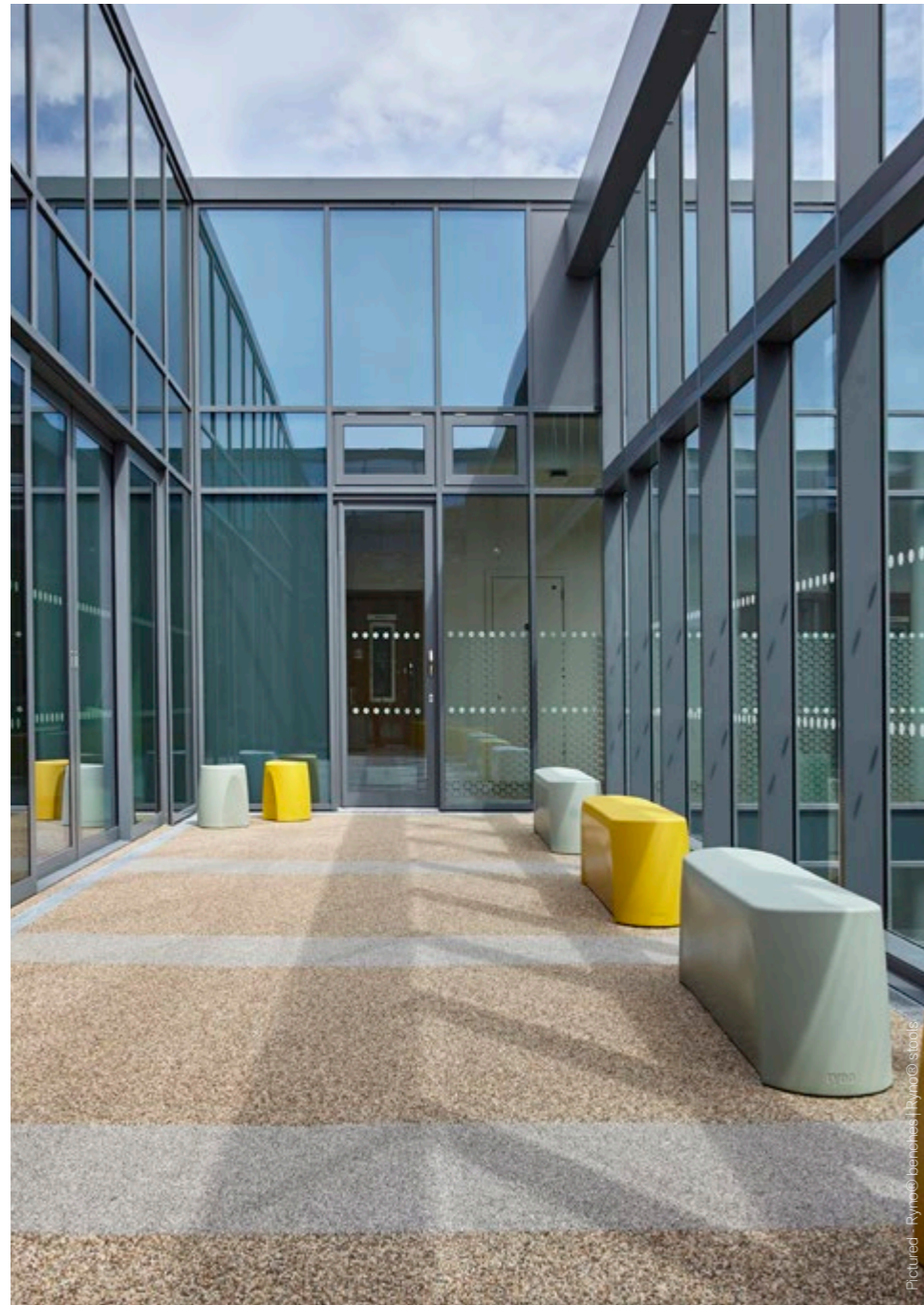
**Contractor** Integrated Health Projects

### Furniture provided by Pineapple

- Ryno® benches
- Ryno® dining chairs
- Ryno® stools
- Sovie beds
- Scorpio mattresses
- Cumulus coffee tables
- Cumulus dining tables
- Cumulus Plus coffee tables
- Snug Plus modular seating
- Skye Plus chairs
- Boden beanbags
- Contessa foam shapes







“We selected Pineapple because of their excellent knowledge of the healthcare sector and their range of products suitable for high-risk environments.”

## CASE STUDY

### St. Ann’s Hospital

The recently completed redevelopment of St. Ann’s Hospital in Haringey, saw us work alongside project leaders from Barnet, Enfield & Haringey NHS Trust to provide furniture for a new state-of-the-art 74-bed scheme which offers improved mental health inpatient facilities.

To ensure our clients were confident in their upholstery choices and to alleviate any interior design decisions, we listened to their concerns and by understanding the needs of the healthcare sector, we were happy to be able to offer further assistance. We ordered an array of vinyl upholstery sample options (based on an



initial selection), upon which a visit to our Pineapple showroom was arranged. Visiting a showroom can be an important part of any project, our knowledgeable and friendly sales team understand the client’s needs and can guide the client through our varied furniture ranges; to see our products in-situ can help showcase the importance of mindful design and how we can match furniture or can help develop new products to fit with the client’s brief and deliver a successful outcome.

Photography by Bruno Rondinelli



# CHASE FARM HOSPITAL

## Cumbria Villa, Mental Health Unit

**Category** Mental and Behavioral Health

**Location** Enfield, London | England

**Year of completion** 2022

**Client** Barnet, Enfield & Haringey Mental Health NHS Trust

**Architect** AK Design Partnership LLP

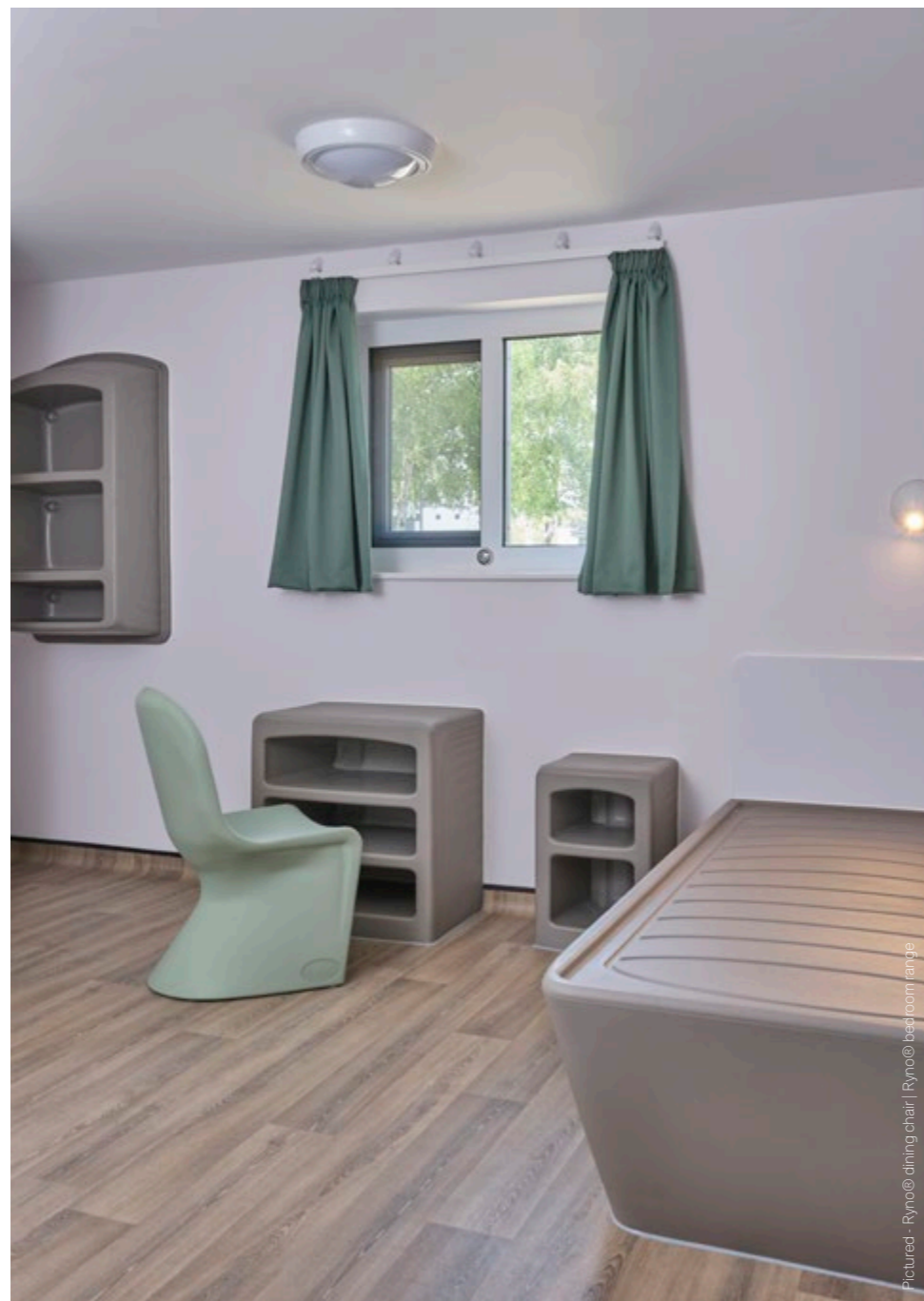
**Contractor** Storm Building Ltd

### Furniture provided by Pineapple

- Ryno® bedroom range
- Ryno® dining chairs
- Ryno® stools
- Ryno® benches
- Ryno® dining tables
- Sovie beds
- Cumulus Plus dining tables
- Cumulus Plus coffee tables
- Magna Plus sofas
- Orr Plus sofas







“Ryno is currently the Trusts preferred range of bedroom furniture for our adolescent and adult acute wards and has been incorporated into the last two or three major ward refurbishments.”

## CASE STUDY Chase Farm Hospital

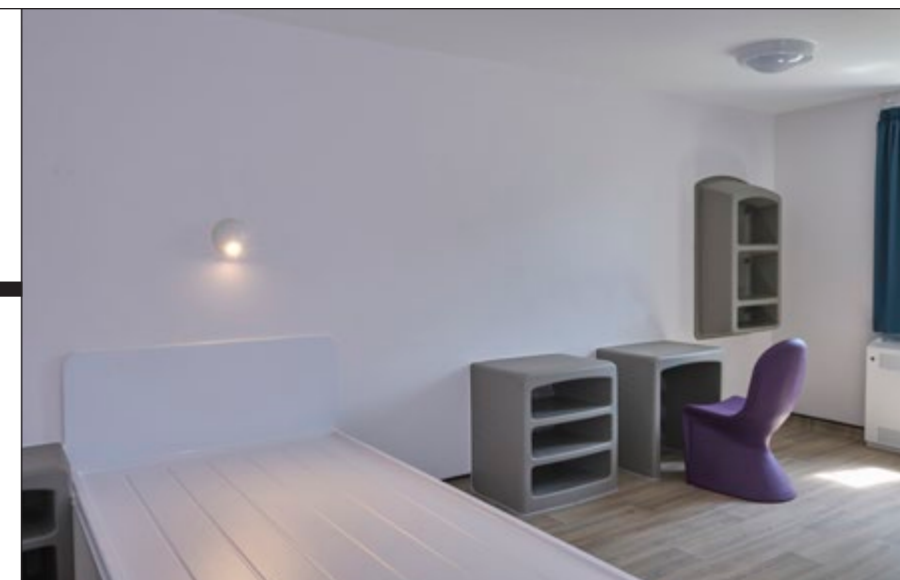
Cumbria Villa is a secure mental health unit situated at Chase Farm Hospital in North London, managed by Barnet, Enfield & Haringey Mental Health Trust. A recent development and extension to the hospital site saw Cumbria Villa further enhance its services to provide a 15-bed ward for patients requiring specialized psychiatric care within a secure mental health environment.

Products from our Ryno® range were chosen for the bedrooms. With their open-fronted design and carefully rounded shapes, Ryno products are designed to minimize ligature risks which makes them a popular

choice for private spaces, such as bedrooms where round-the-clock observation isn't always possible.

Access to outdoor space is an important part of everyone's mental health and wellbeing. The secure garden space features a Ryno dining table and chairs along with Ryno stools and benches for informal seating. Ryno products' water-resistant properties make them an ideal choice for outdoor use, come rain or shine.

Photography by Bruno Rondinelli





# UNIVERSITY HOSPITAL

## Psychiatric Unit

**Category** Mental and Behavioral Health

**Location** Giessen and Marburg | Germany

**Year of completion** 2023

**Client** UKGM

### Furniture provided by Pineapple

→ Ryno® dining chairs

→ Ryno® club chairs

→ Ryno® dining tables

→ Ryno® benches

→ Cumulus dining tables







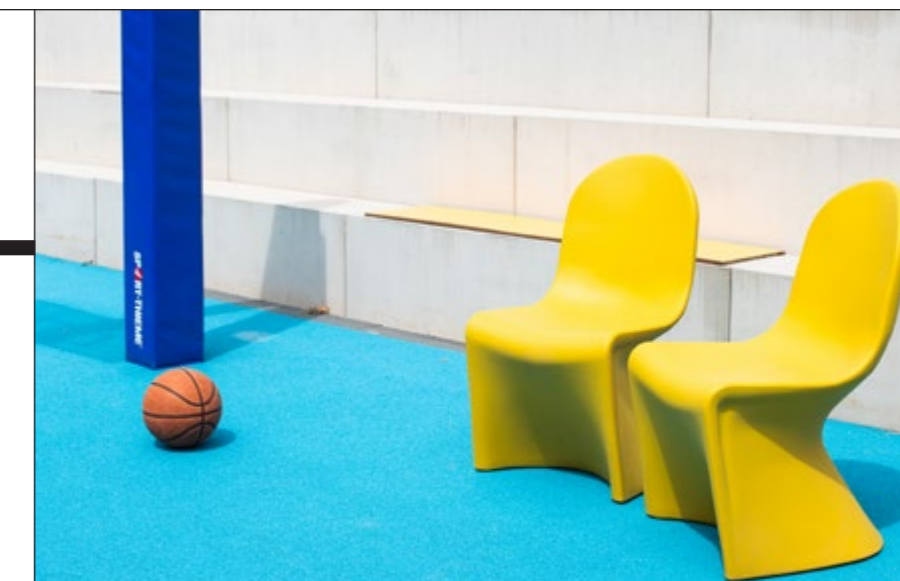
For this child and adolescent psychiatry unit at the Giessen and Marburg University Hospital, a robust, long-lasting design was a primary requirement.

## CASE STUDY

### University Hospital Giessen & Marburg GmbH

Due to previous experience with unsuitable furniture in a psychiatric setting, the clinical team was looking for a more durable alternative. The hospital's decision to invest in high quality and durable furniture such as the Ryno® series demonstrated their commitment to improving safety as well as ensuring the furniture has a longer service life. This approach not only prevents self-harm, but also contributes to overall safety.

Our robust Ryno® dining chairs, Ryno® dining tables and Ryno® benches were placed outdoors to create safe yet comfortable living areas.



The UV and water-resistant properties of the Ryno® series make them suitable for outdoor use and thus expand the functional areas of the facility.

The combination of safety, durability and solid aesthetics can promote the well-being of patients and staff. Patients can feel comfortable in their environment while staff can carry out their tasks efficiently and with little risk.

Photography by Jan Will



# SONNEGARTE DORMITORY

## Mental Health Residential Home

**Category** Mental and Behavioral Health

**Location** Lucerne | Switzerland

**Year of completion** 2023

**Client** Luzerner Psychiatrie AG

### Furniture provided by Pineapple

- Ryno® beds
- Ryno® open bedsides
- Ryno® tub chairs
- Cumulus Plus coffee tables
- Snug Plus modular seating
- Orr Plus sofas
- Magna Plus sofas



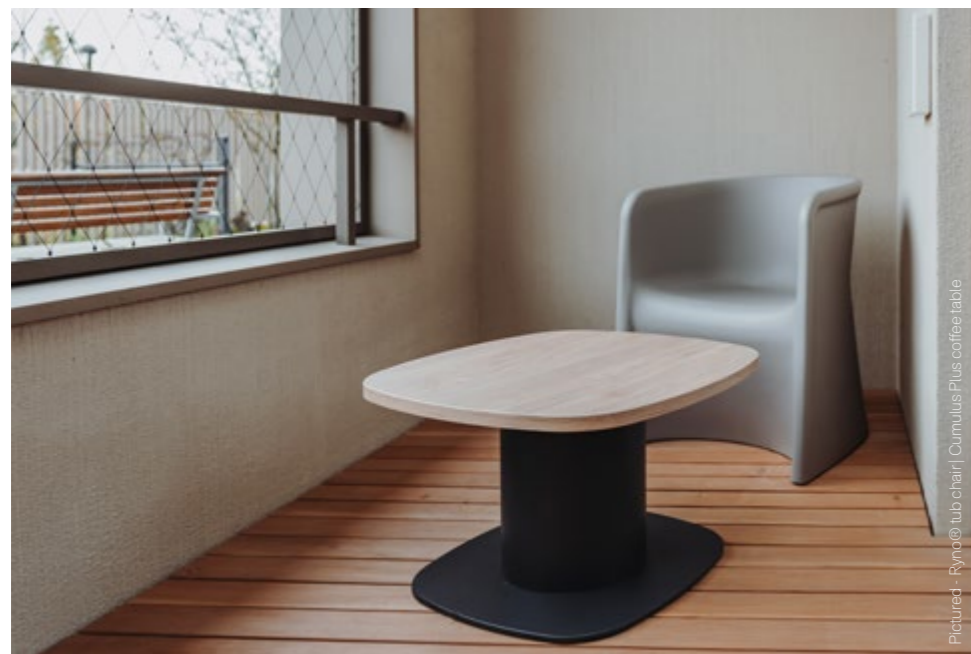




Pictured - Ryno® bed | Ryno® open bedside



Pictured - Magna Plus armchair | Cumulus Plus coffee table



Pictured - Ryno® tub chair | Cumulus Plus coffee table



Pictured - Magna Plus armchair | Magna Plus 3-seater

With the new Sonnegarte dormitory, a building was created with a total of 64 care places for adults with varying mental health concerns.

## CASE STUDY Lucerne Psychiatric unit

The Sonnegarte residential home accompanies, cares for and supports adults with mental and multiple disabilities and is part of the Lucerne Psychiatry Department. This dormitory was recently expanded to include a new building. Pineapple was able to equip this new building with robust yet stylish furniture, both in the lounge and living areas as well as in the bedrooms.

When it came to furnishing individual bedrooms, we decided, together with the management of the Lucerne Psychiatry, to use our robust Ryno® bedroom range. The main aim there was to reduce the potential for violence and the risk of self-harm. In order to create

comfortable seating and work spaces, we added our Ryno® tub chair as well as the Cumulus Plus coffee tables. The latter features a robust and heavily weighted base.

Magna Plus armchair and 3-seater were also chosen for this unique space and is one of our most popular sofa series. Both Magna Plus, Orr Plus seating ranges as well as Snug Plus modular seating adorn select patient rooms and hallway areas. Thoughtfully upholstered in dark shades from our easy to clean water-resistant vinyl selection.

Photography by Samuel Erni



# EPICEA

## Psychiatric Crisis and Calming Space

**Category** Mental an Behavioral Health

**Location** Rodez | France

**Year of completion** 2023

**Client** Sainte-Marie Aveyron | Association Hospitalière  
Sainte-Marie

### Furniture provided by Pineapple

- Ryno@ dining chairs
- Ryno@ lounge chairs
- Ryno@ activity tables
- Ryno@ dining tables
- Ryno@ open bedsides
- Sovie beds
- Scorpio mattresses
- Coda armchairs
- Skye Plus chairs
- Xeon Plus chairs
- Cumulus Plus dining tables
- Larsen arm chairs
- Contessa foam drums



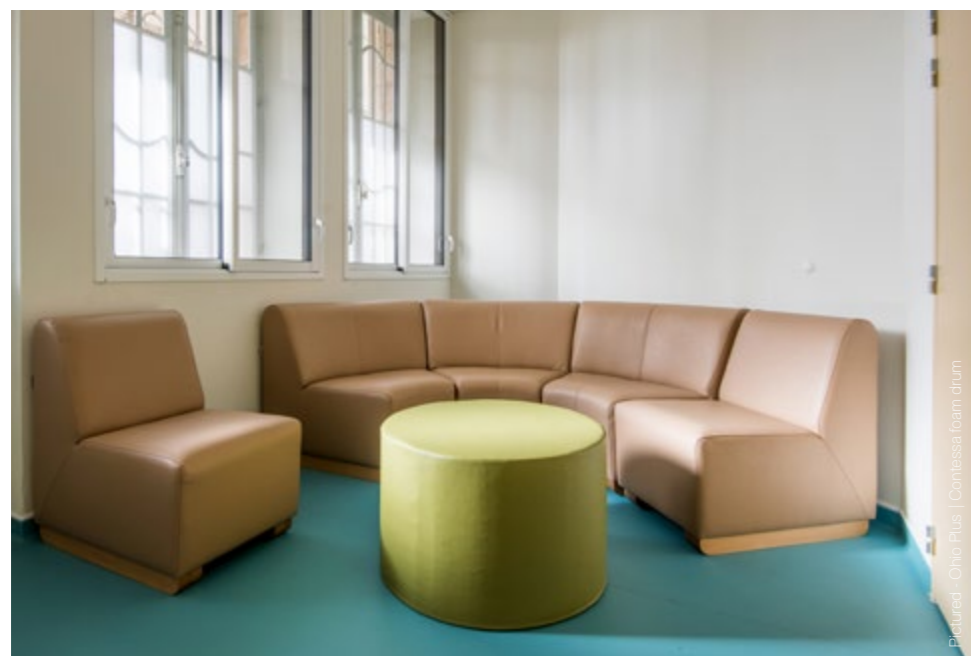




Pictured - Cumulus Plus dining table | Xeon Plus chairs



Pictured - Ryno dining chairs | Ryno lounge chairs



Pictured - Ohio Plus | Contessa foam drum



Pictured - Coda armchairs

For the Sainte-Marie Aveyron Establishments, which are part of the Sainte-Marie Hospital Association, it was imperative to offer patients an environment that reduced sources of anxiety and stress.

## CASE STUDY

### Sainte-Marie Rodez

The EPICEA closed unit (Intersectoral Psychiatric Space for Crisis and Appeasement) is a unique style of unit. For the Sainte Marie Hospital Center in Rodez, it was imperative to offer patients an environment that reduced sources of anxiety and stress.

To do this, the Ryno® range was chosen thanks to its soft curves and its invigorating color palette to furnish the outdoor space.

The family reception was designed around the idea of having a space that can adapt to the needs of the patient and their visitors, Ohio Plus armchairs and the



Contessa foam drum were chosen for their versatility and modular design.

The lounge area has been furnished with Coda armchairs. These uniquely designed seats provide ample space for rest and relaxation. The bedrooms were furnished with a mix of Ryno® in Epic Blue and our Sovie beds. The common area divided into a TV corner and an activity area has been thoughtfully furnished with our range of Coda armchairs, a Cumulus Plus table and Xeon Plus chairs.

Photography by Cédric Meravilles



# UNITÉ DE VIE – FONDATION SAVART

## Adult Spectrum Disorder Living Unit

**Category** Behavioral Health

**Location** Saint-Michel | France

**Year of completion** 2024

**Client** Foundation Savart | Abbey Life Unit

### Furniture provided by Pineapple

- Ryno® dining chairs
- Ryno® club chair
- Ryno® activity tables
- Ryno® coffee table
- Ryno® beds
- Ryno® open nightstand
- Cumulus Plus dining tables
- Acumen bariatric bed
- Snug Plus modular seating
- Boden donut bean bag
- Zen rocker







Pictured - Ryno® lounge chairs | Ryno® coffee table



Pictured - Ryno® dining table | Ryno® Plus tables



Pictured - Ryno® dining chairs | Ryno® pedestal table



Pictured - Snug modular seating | Boden donut bean bag

Foundation Savart opened the Abbey Life Unit to welcome adults with ASD to Saint-Michel.

## CASE STUDY

### Abbey Life Unit

The Abbey living unit welcomes adults with autism spectrum disorders and other disabilities requiring adapted accommodations.

Pineapple fitted the dining area with Ryno® dining tables and club chairs.

In the lounge area, Snug Plus sofas and a Boden Donut were selected to offer comfortable and spacious seating in order to respect everyone's personal spaces. The modular aspect was welcomed to allow the supervisory staff to adapt the living space to the needs of the residents.



In the rooms, the furniture was adapted to each patient. Acumen bariatric beds accommodate larger patients and Ryno® beds were installed in the other rooms to provide a durable and easy-to-maintain bed for staff while preserving a welcoming appearance.

Zen Rockers were installed in each room to allow residents to regain their peace of mind independently with free access.

Finally, the activity rooms were furnished with Cumulus tables and Ryno® chairs to allow provide durability and lifetime dependability.

Photography by Olivier Martinache



# SOUTHERN REMAND CENTER

## Rehabilitative Custodial Space

**Category** Correctional

**Location** Tasmania | Australia

**Year of completion** 2022

**Client** Department of Justice

**Architect** XSquared Architects | Guymer Bailey Architects

### Furniture provided by Pineapple

→ Ryno® dining chairs

→ Ryno® lounge chairs

→ Ryno® coffee tables

→ Ryno® activity tables







This substantial project showcases the connection between design, dignity and safety in correctional environments, and how they can contribute to the pathway of rehabilitation.

## CASE STUDY Southern Remand Center

The Southern Remand Center in Tasmania, Australia was built to house remandees held in custody pending the outcome of court hearings and sentencing decisions. The \$70m project by the Tasmanian Government was devised to relieve pressure on the prison system, which previously housed remandees along with the general prison population.

It has been carefully designed to be a rehabilitative space, with natural light, colors and materials all contributing to its positive atmosphere. With aesthetics needing to be balanced with the highest security and safety standards required by modern correctional



facilities, products from our Ryno® range were the perfect choice.

With their unique blend of extreme safety, security, and a modern aesthetic, Ryno products are designed to soften and improve the built environment while preserving safety for all.

Photography by Xsquared Architects | Natasha Mulhall



# Ready to discuss your project?

To arrange a demonstration or book a  
visit to our showroom, please call  
800.496.9324 or email  
[inquiries@pineapplecontracts.com](mailto:inquiries@pineapplecontracts.com)

---



**Pineapple**

 800.496.9324

 7105 19 Mile Road, Sterling Heights, MI 48314

 [us.pineapplecontracts.com](https://us.pineapplecontracts.com)  [inquiries@pineapplecontracts.com](mailto:inquiries@pineapplecontracts.com)

