

RYNO[®]

Wall

Bed



Pineapple



Designed with ergonomics in mind, one side of the Ryno Wall Bed is angled outwards, making it easier for users to stand up from the bed. This feature also improves access for caregivers, allowing them to stand closer to the bed when delivering care, reducing the likelihood of back injuries.

The straight side allows the bed to be fitted flush against the wall, minimizing concealment opportunities. Where required, the Ryno Wall bed can be customized for compatibility with common coved flooring systems to minimize gaps between the bed and the wall.

Like all Ryno products, the Wall Bed is rotationally molded to form a single piece with no joints or seams which would otherwise be a point of weakness. The single-piece construction also minimizes concealment opportunities as well as making the product 100% waterproof.

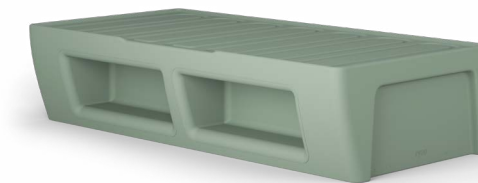
The Ryno Wall Bed is available with or without storage compartments, and is available in 14 versatile colors.



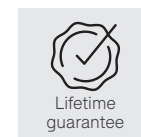
RYNO® WALL BED



Ryno wall bed without storage
 1RYB-F
 18.9H | 80.7L | 39.8W (in)
 Weight: 132.2lb



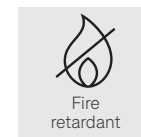
Ryno wall bed with storage
 1RYBS-F
 18.9H | 80.7L | 29.8W (in)
 Weight: 132.2lb



Lifetime guarantee



Waterproof



Fire retardant

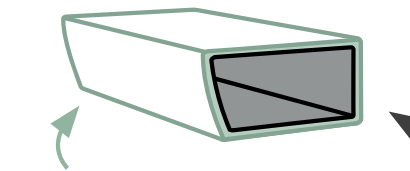


100% LDPE

Straight side allows the bed to be fitted flush against a wall

KEY FEATURES

- Flared side provides improved patient mobility and access to caregivers
- Straight side allows the bed to be fitted flush against a wall
- Compatible with covered flooring (please specify at point of order)
- 100% waterproof construction with hygienic wipe-clean surface
- Strength and stability tested for severe contract use



Exterior:
 Choose from 14 versatile shades



Interior:
 Recycled content (40% of total)

OPTIONS

- Floor fixing solution
- Anti-concealment base plate
- 14 versatile shell colors, including our OceanGreen colour (weight: 143.3lb)

← Core color

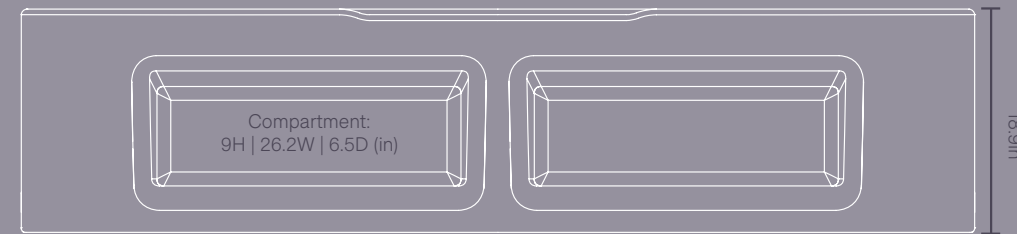
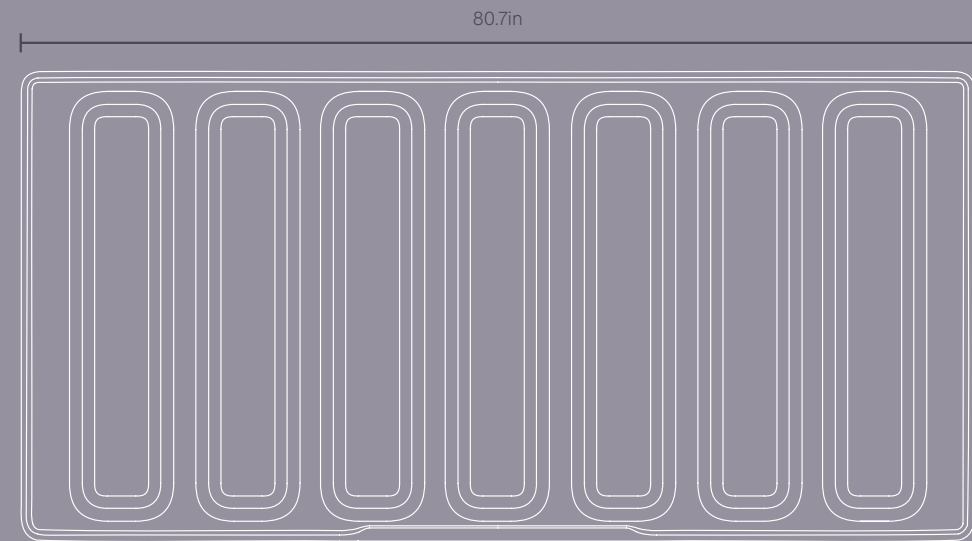
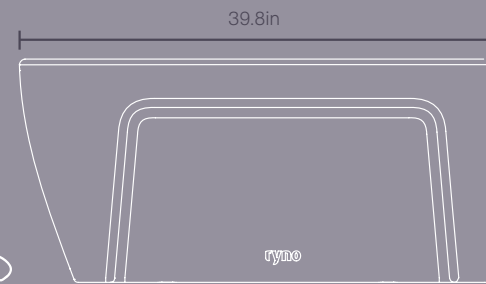


Where required, the Ryno Wall bed can be customized for compatibility with common coved flooring systems to minimize gaps between the bed and the wall.

Please discuss your requirements at point of order.



Flared on one side to provide improved patient mobility and access to caregivers



See for yourself...

To arrange a demonstration or book a visit to our showroom, please call 800.496.9324

Pineapple 7105 19 Mile Road, SterlingHeights, MI 48314

T

800.496.9324

E

inquiries@pineapplecontracts.com

W

us.pineapplecontracts.com

Pineapple