



Dining chair  
Unweighted: 26.5 LBS.



Children's dining chair  
Unweighted: 17.5 LBS.



Club chair  
Unweighted: 40 LBS.

	Floor fixing	Linking together	Additional weighting
Dining chair	 <ul style="list-style-type: none"> <li>Floor fixing kit available</li> </ul>	 <ul style="list-style-type: none"> <li>Linking brackets available</li> </ul>	 <ul style="list-style-type: none"> <li>To 126.5 LBS.</li> <li>Other weights available - please contact us</li> </ul>
Children's dining chair	 <ul style="list-style-type: none"> <li>Floor fixing kit available</li> </ul>	 <ul style="list-style-type: none"> <li>Linking brackets available</li> </ul>	 <ul style="list-style-type: none"> <li>To 67.5 LBS.</li> <li>Other weights available - please contact us</li> </ul>
Club chair	 <ul style="list-style-type: none"> <li>Floor fixing kit available</li> </ul>		 <ul style="list-style-type: none"> <li>To 165 LBS.</li> <li>Other weights available - please contact us</li> </ul>

## WHICH OPTION IS RIGHT FOR YOU?

### Floor fixing


- Installation creates immovable items which minimise disruption and maximise safety
- Room layouts are not easily adjusted
- Relies on a solid substrate for secure fixing (for underfloor heating, please contact us)

### Linking

- Items are linked with a heavy-duty steel linking plate
- Enables the creation of fixed layouts without drilling into floors or walls

### Weighting

- Makes items difficult to pick up or throw
- Does not require installation
- Rooms layouts can be easily adjusted

	Floor fixing	Linking together	Additional weighting
 <p><b>Tub chair</b> Unweighted: 40 LBS.</p>	<p>✓</p> <ul style="list-style-type: none"> <li>Floor fixing brackets available</li> </ul>	<p>✓</p> <ul style="list-style-type: none"> <li>Linking brackets available</li> </ul>	<p>✓</p> <ul style="list-style-type: none"> <li>To 165 LBS.</li> <li>Other weights available - please contact us</li> </ul>
 <p><b>Lounge chair</b> Unweighted: 30 LBS.</p>	<p>✓</p> <ul style="list-style-type: none"> <li>Floor fixing brackets available</li> </ul>	<p>✓</p> <ul style="list-style-type: none"> <li>Linking brackets available</li> </ul>	<p>✓</p> <ul style="list-style-type: none"> <li>To 155 LBS.</li> <li>Other weights available - please contact us</li> </ul>
 <p><b>Coffee table</b> Unweighted: 26 LBS.</p>	<p>✓</p> <ul style="list-style-type: none"> <li>Floor fixing brackets available</li> </ul>	<p>✗</p>	<p>✓</p> <ul style="list-style-type: none"> <li>To 126 LBS.</li> <li>Other weights available - please contact us</li> </ul>

## WHICH OPTION IS RIGHT FOR YOU?

Floor fixing	Linking	Weighting
<ul style="list-style-type: none"> <li>Installation creates immovable items which minimise disruption and maximise safety</li> <li>Room layouts are not easily adjusted</li> <li>Relies on a solid substrate for secure fixing (for underfloor heating, please contact us)</li> </ul>	<ul style="list-style-type: none"> <li>Items are linked with a heavy-duty steel linking plate</li> <li>Enables the creation of fixed layouts without drilling into floors or walls</li> </ul>	<ul style="list-style-type: none"> <li>Makes items difficult to pick up or throw</li> <li>Does not require installation</li> <li>Rooms layouts can be easily adjusted</li> </ul>



**Bench**  
Unweighted: 55 LBS.



**Stool**  
Unweighted: 11 LBS.

	Floor fixing	Linking together	Additional weighting
<b>Bench</b>	<p>✓</p> <ul style="list-style-type: none"> <li>• Must be specified at point of order</li> <li>• Floor fixing kit available</li> <li>• Cannot be floor fixed if previously weighted</li> </ul>	<p>✗</p>	<p>✓</p> <ul style="list-style-type: none"> <li>• To 155 LBS.</li> <li>• Other weights available - please contact us</li> <li>• Cannot be weighted and floor fixed</li> </ul>
<b>Stool</b>	<p>✓</p> <ul style="list-style-type: none"> <li>• Must be specified at point of order</li> <li>• Floor fixing kit available</li> <li>• Cannot be floor fixed if previously weighted</li> </ul>	<p>✗</p>	<p>✓</p> <ul style="list-style-type: none"> <li>• To 111 LBS.</li> <li>• Other weights available - please contact us</li> <li>• Cannot be weighted and floor fixed</li> </ul>

## WHICH OPTION IS RIGHT FOR YOU?

### Floor fixing

- Installation creates immovable items which minimise disruption and maximise safety
- Room layouts are not easily adjusted
- Relies on a solid substrate for secure fixing (for underfloor heating, please contact us)

### Weighting

- Makes items difficult to pick up or throw
- Does not require installation
- Rooms layouts can be easily adjusted



Dining table  
Unweighted: 101 LBS.



Dining/activity table  
Unweighted: 187 LBS.

	Floor fixing	Linking together	Additional weighting
Dining table	<p>✓</p> <ul style="list-style-type: none"> <li>Floor fixing brackets available</li> </ul>	<p>✗</p>	<p>✓</p> <ul style="list-style-type: none"> <li>To 201 LBS.</li> <li>Other weights available - please contact us</li> </ul>
Dining/activity table	<p>✓</p> <ul style="list-style-type: none"> <li>Floor fixing brackets available</li> </ul>	<p>✗</p>	<p>✓</p> <ul style="list-style-type: none"> <li>To 297 LBS.</li> <li>Other weights available - please contact us</li> </ul>

## WHICH OPTION IS RIGHT FOR YOU?

### Floor fixing

- Installation creates immovable items which minimise disruption and maximise safety
- Room layouts are not easily adjusted
- Relies on a solid substrate for secure fixing (for underfloor heating, please contact us)

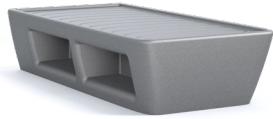
### Weighting

- Makes items difficult to pick up or throw
- Does not require installation
- Rooms layouts can be easily adjusted

# RYNO<sup>®</sup> OPTIONS FOR INCREASING SAFETY AND SECURITY



**Bed**  
Weight: 125 LBS.



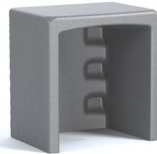
**Bed with storage**  
Weight: 125 LBS.



**Bedside**  
Weight: 24 LBS.



**Chest**  
Weight: 48.5 LBS.



**Desk**  
Weight: 33 LBS.



**Wall shelf**  
Weight: 40 LBS.

	Floor fixing	Wall fixing	Additional weighting
 <ul style="list-style-type: none"> <li>Must be specified at point of order, floor fixing kit supplied</li> </ul>			
 <ul style="list-style-type: none"> <li>Must be specified at point of order, floor fixing kit supplied</li> </ul>	 <ul style="list-style-type: none"> <li>Using appropriate screws and wall fixings</li> </ul>		
	 <ul style="list-style-type: none"> <li>Fixing batten supplied</li> </ul>		

T  
E  
W

800.496.9324  
[inquiries@pineapplecontracts.com](mailto:inquiries@pineapplecontracts.com)  
[us.pineapplecontracts.com](http://us.pineapplecontracts.com)

**Pineapple**